

Marine Safety Center Design Update

CITY COUNCIL MEETING

OCTOBER 14, 2020

Background

- May 2017 – Needs assessment and feasibility study
- October 2018 – PSA with domusstudio architecture
- February 2019 – Community Workshop
- November 2019 – three design options presented to the City Council

Previous Council Direction

- Pursue the above-ground option for operational functionality
- Avoid splitting buildings
- Reduce bulk and scale to the extent possible
- Need for observation of the beach and the park
- Tuck new building into the southern slope to the maximum extent possible

Previous Council Direction (cont.)

- Desire for permanent tower at the bottom of the beach access ramp
- Improve access from the new building to the beach
- Preserve existing public views to the greatest extent possible
- Continue to involve the community

Updated Design from Previous Council Meeting

- Building pushed into the southerly slope
- Combined into one building to increase efficiency
- Incorporated a new outdoor deck allowing full view of the park
- Includes three different roof options
- South facing roof for to allow for solar panels
- Functional areas

Preliminary Square Footage Breakdown of Functional Areas

Solana Beach Marine Safety Center	
Room Name	Area (SF)
Observation	183
Sheriff's	67
Open Office	447
Captain's Office	145
Meeting Room	159
Storage	26
First Aid	129
Lobby	140
Restrooms	79
Hall	294
Kitchen	395
Closet	43
Locker Room	337
Locker Room	325
Public Works Storage/Work Station	114
Garage	1,018
Jr. Guard	291
Total	4,192

Direct Access to the Beach

PROS:

- Provides accessible beach access
- Provides direct/shortcut beach access for Lifeguards
- Improves operations/enhances public safety
- Provides bluff protection
- Provides protection for the proposed building

CONS:

- Would require construction on the bluff which could be problematic and expensive
- Would cost more for design and construction

Solana Beach Marine Safety Center

Room No.	Room Name	Area
1g	observation	183 SF
2g	Sheriff's	67 SF
3g	open office	447 SF
4g	captains office	145 SF
5g	meeting room	159 SF
6g	storage	26 SF
7g	first aid	129 SF
8g	lobby	140 SF
9g	restroom	79 SF
10g	hall	294 SF
11g	kitchen	395 SF
12g	closet	43 SF
13g	locker room	337 SF
14g	locker room	325 SF
15g	public works storage/work station	114 SF
16g	garage	1,018 SF
17g	Jr. Guard	291 SF
		4,192 SF

Shaded sting ray treatment area with overhead door to first aid room for easy treatment of overflow patients

Tideboard storage

Outdoor Shower
Integrated
Outdoor Storage

Guardrail

Access to locker rooms from back deck

Courtyard

Public entrance

line of roof above

Junior guard entrance

Level 1

line of roof above

open office

captains office

meeting room

meeting room

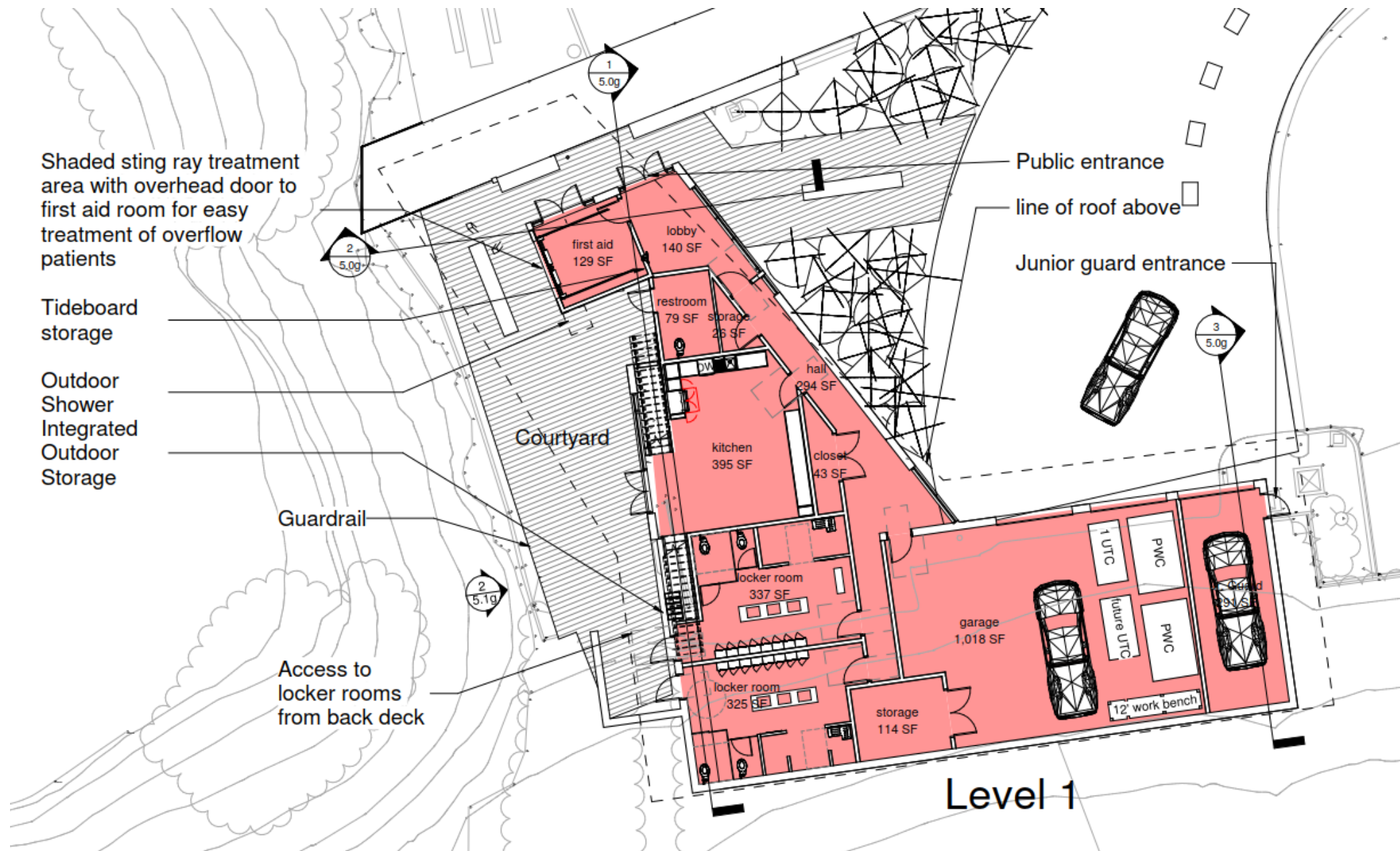
mezzanine storage room

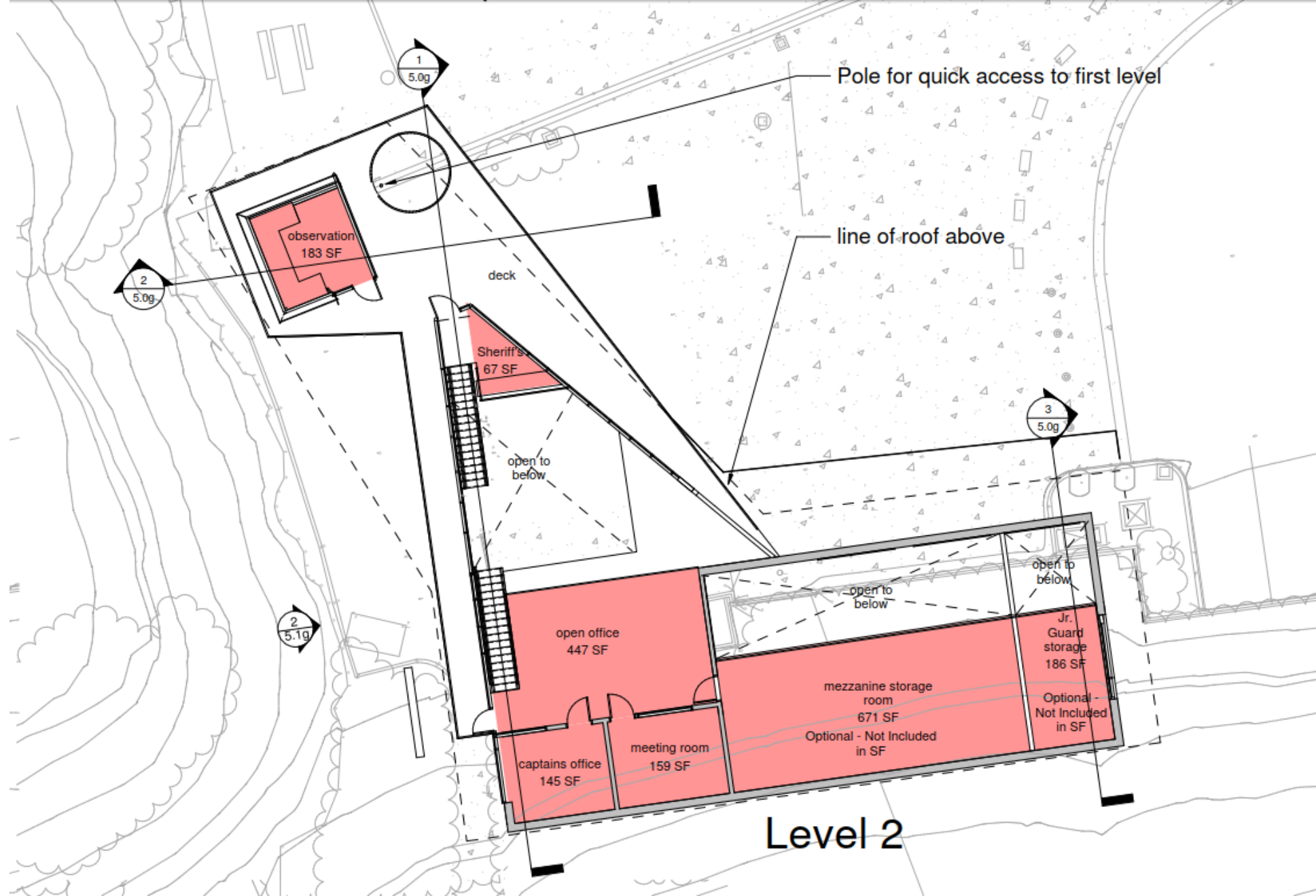
Optional - Not included in SF

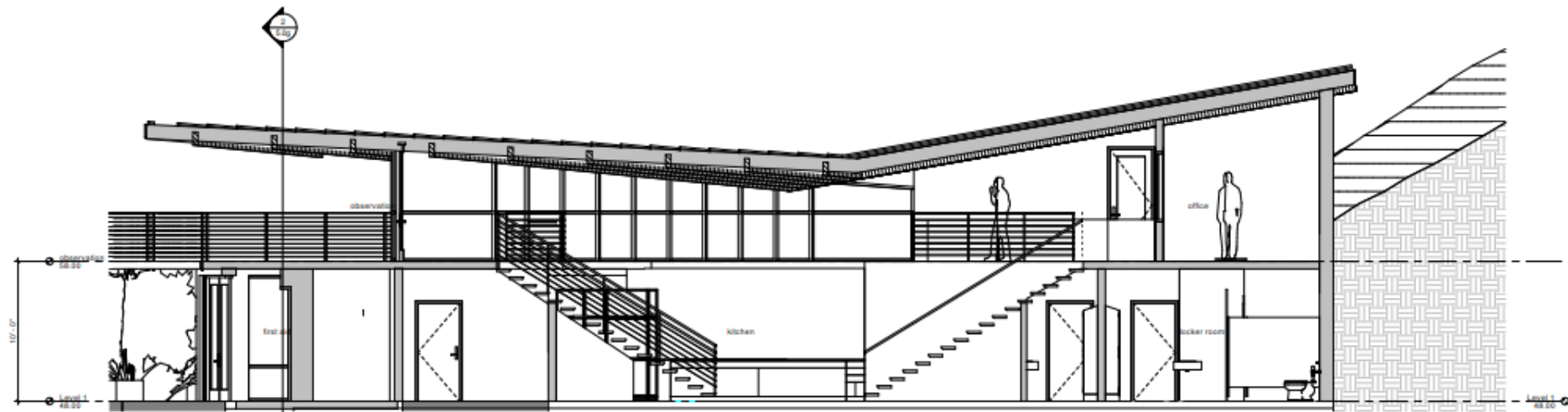
Jr. Guard storage

Optional - Not included in SF

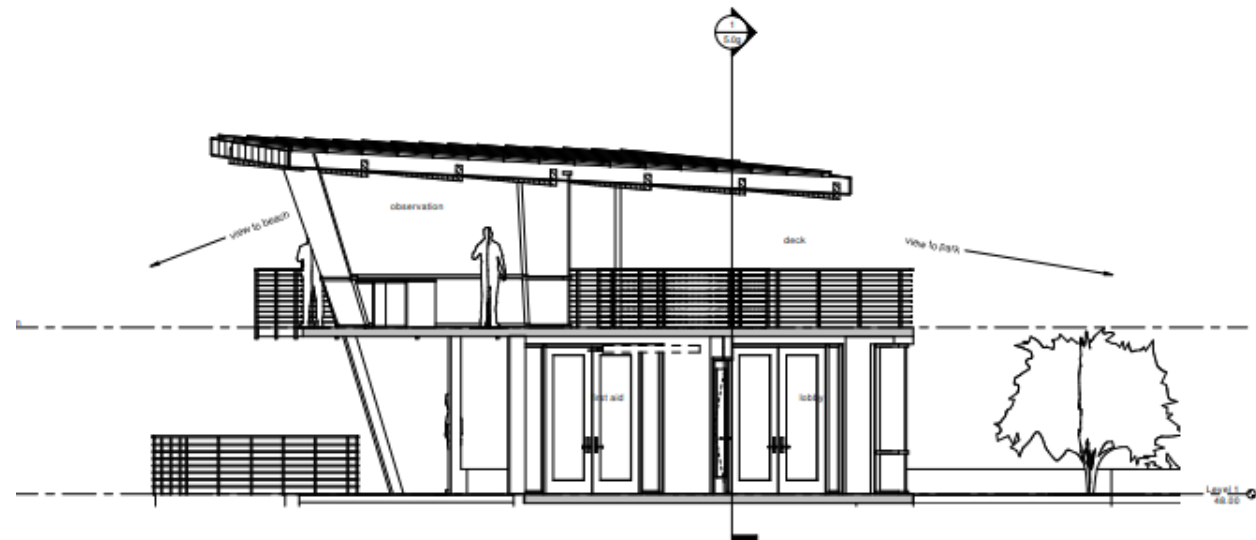
Level 2



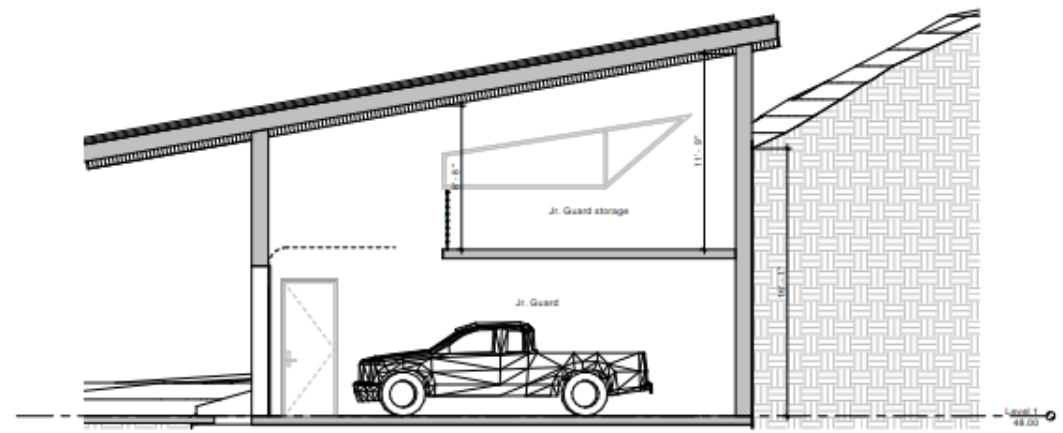




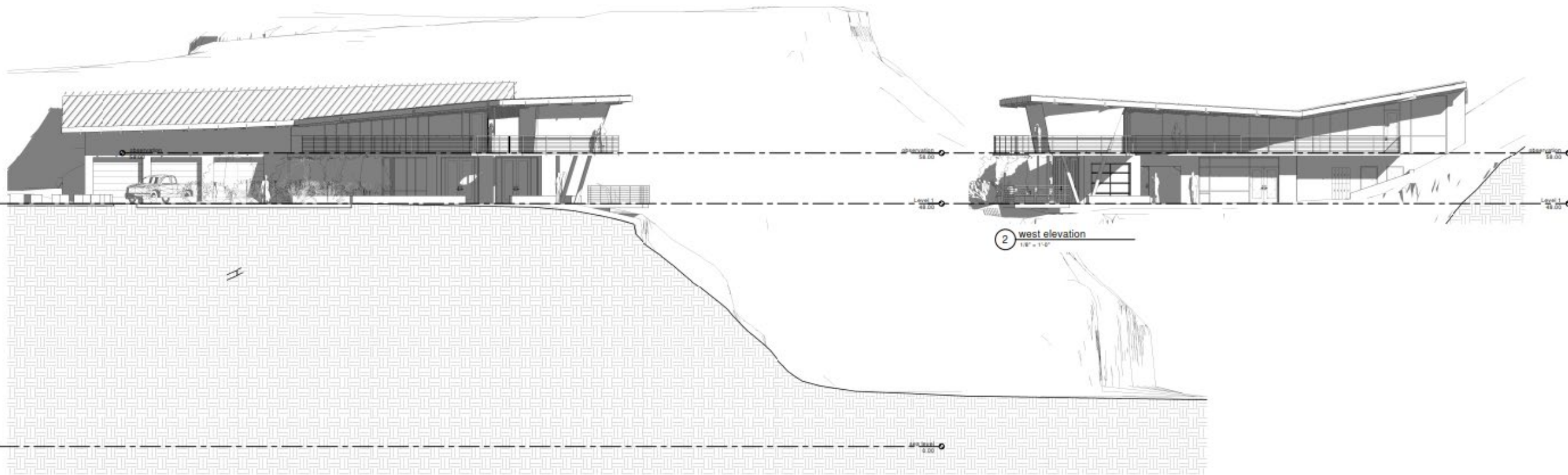
1 north south section at stairways
1/4" = 1'-0"



2 east west section at observation
1/4" = 1'-0"



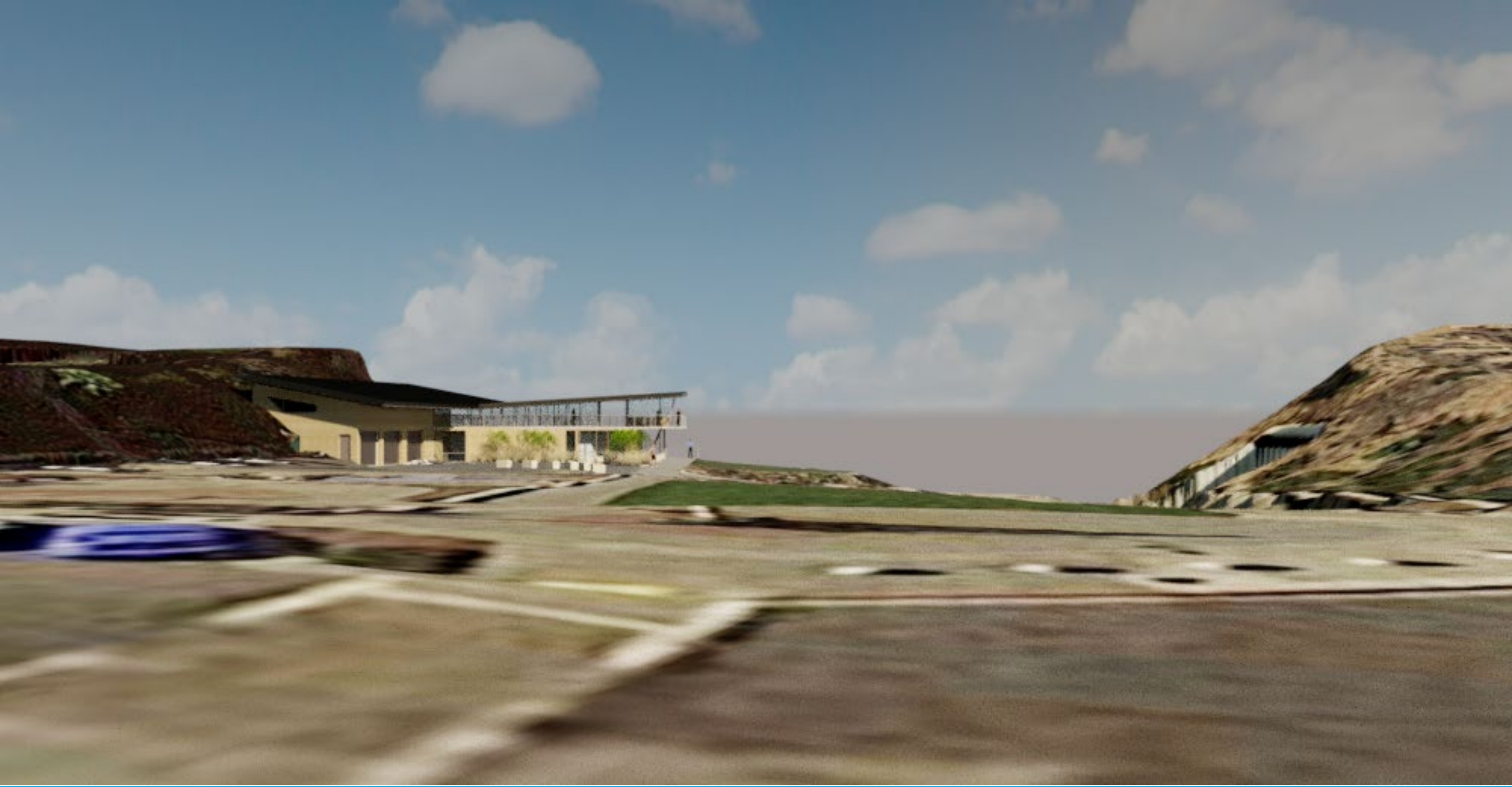
3 section at Jr. Guard storage
1/4" = 1'-0"



1 north elevation
1/8" = 1'-0"

2 west elevation
1/8" = 1'-0"











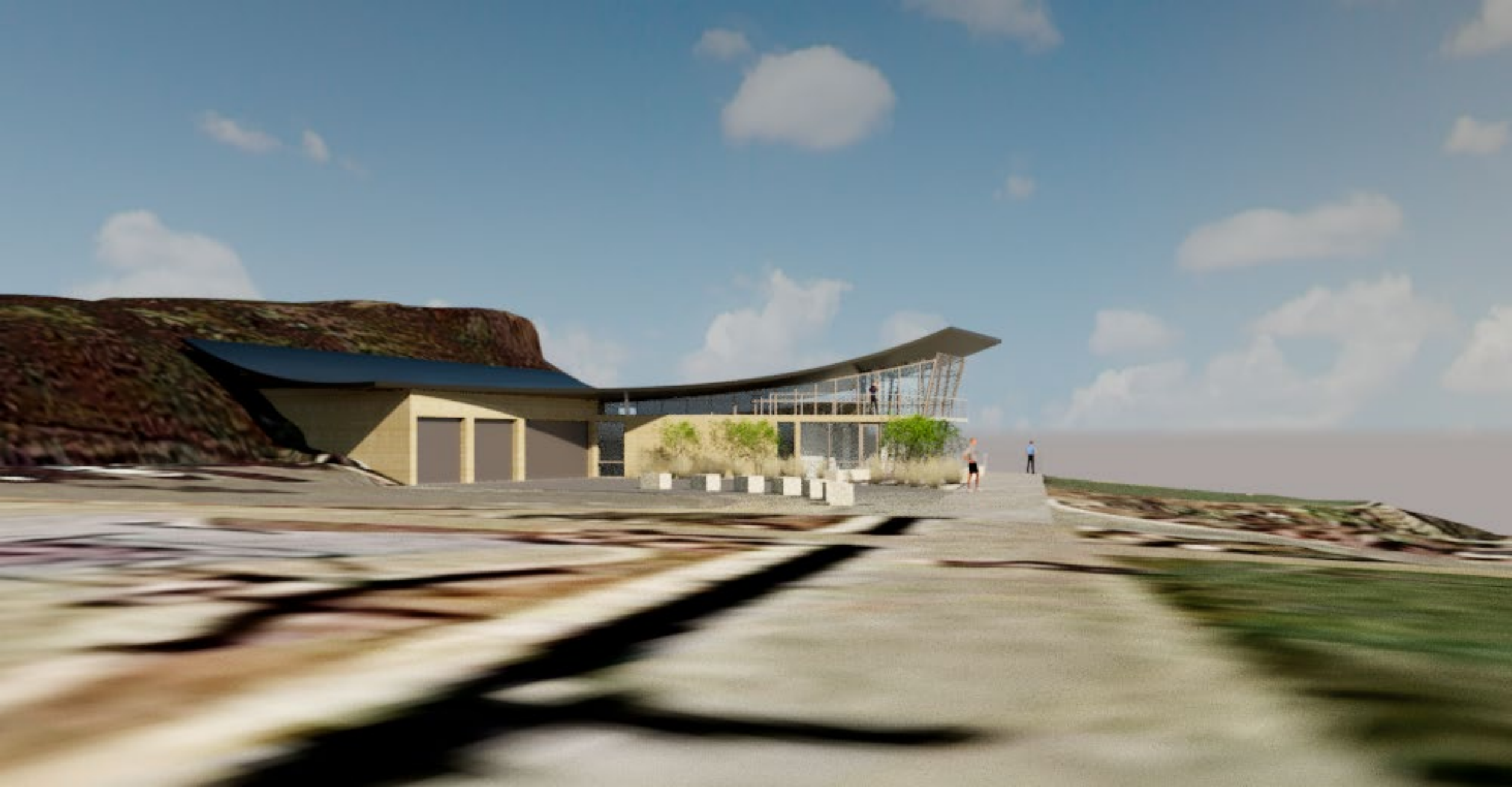


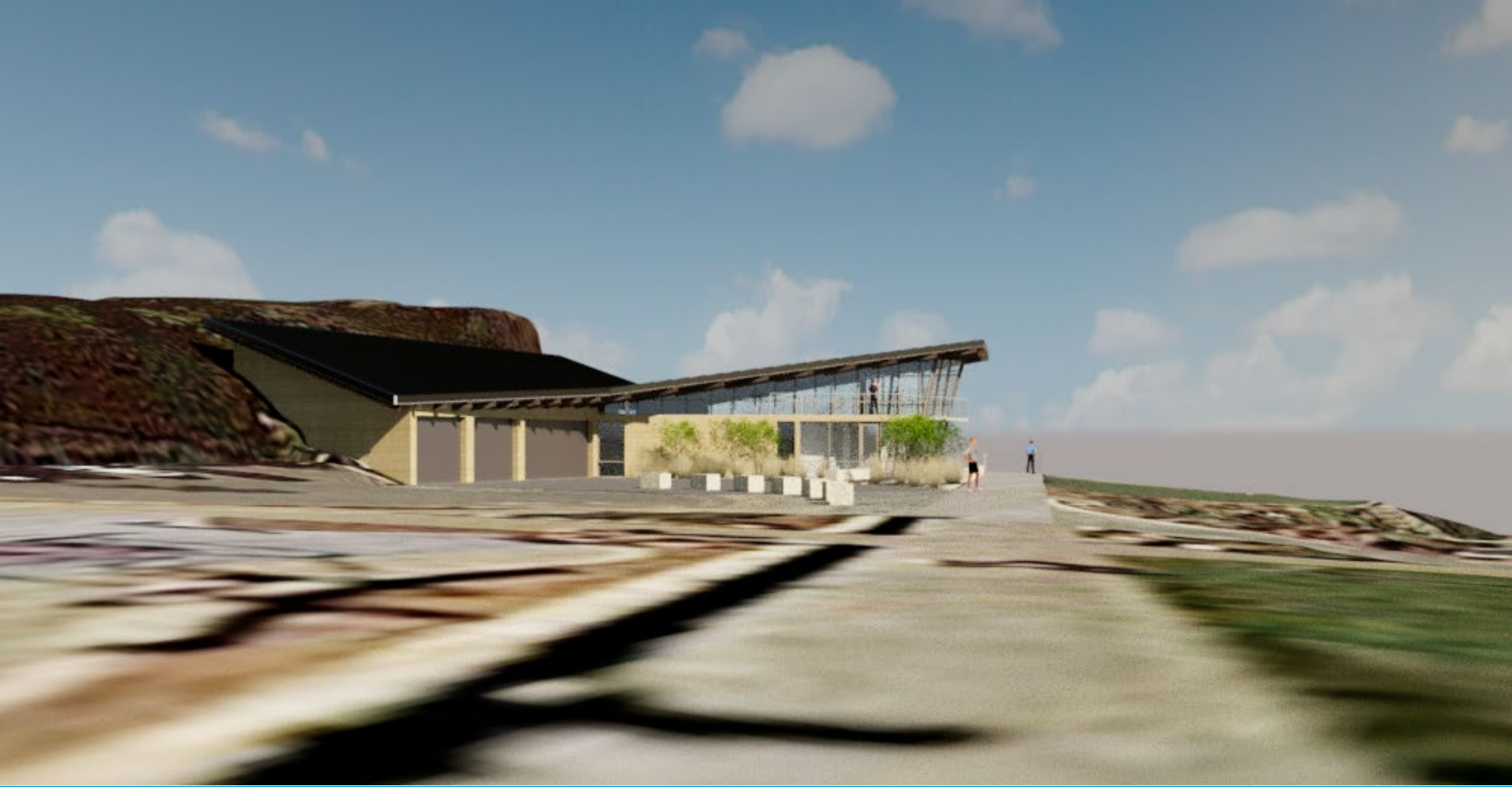


















Questions/Direction