



GLENMONT DRIVE NEIGHBORHOOD PARK

Landscape Concept Plan

Background

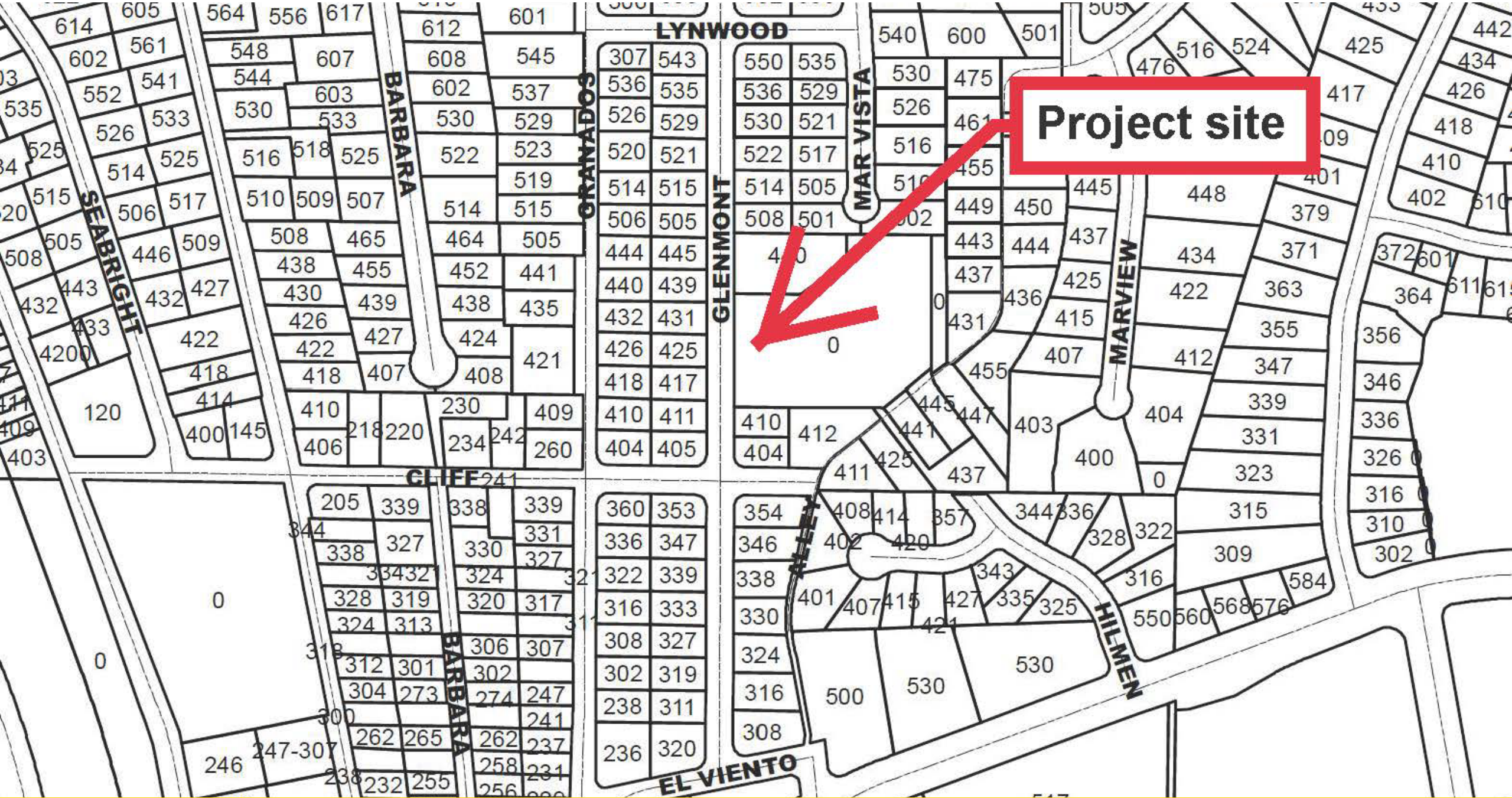
- Residents of Glenmont neighborhood expressed interest in improving the frontage of the reservoir site into a neighborhood park
- Proposes development of approximately half an acre of the Santa Fe Irrigation District (SFID) property at the existing Larrick Water Reservoir site on Glenmont Drive
- City Staff coordinated with SFID Staff to define the scope and parameters of the usable site for this project



Collaboration with SFID Staff

- SFID Staff have been very clear on the fact that the SFID Board will have the ultimate approval authority
- Project is identified in FY 22-23, and 23-24 Work Plan
- In preparation for a presentation of the Work Plan update for the upcoming budget process to the City Council, Staff is seeking the direction from the SFID's Board





Project site







Street View of Existing Site



Street View During Construction



Background Continued

- As the result of joint agency collaboration and in response to the City Council's direction through approval of the Work Plan, a conceptual plan was developed for discussion purposes
- Staff held a preliminary discussion with a small group of community members, followed by two workshops



Conceptual Plan

- Developed by in-house City Staff
- Reflects a “passive park” concept
- Maintains the existing topography to the extent possible
- Reflects the circular shape of the reservoir and replicates ocean waves off a point break to reflect the City’s coastal/beach environment
- Included walking surfaces at various elevations, pollinator gardens, possible organic steps, viewing spot and segmented landscaped areas



Previous Landscape Plan



Previous Design Sketch



Public Comments from Workshop

Residents' comments on concept plan:

- Passive open space preferred to active park space for a low-key, quiet place in the neighborhood to walk and rest on benches enjoying the ocean view
- Landscape should include pollinator plants and shade trees, vegetable/community garden and/or vines covering the fencing
- Looped walkway preferred along with some green space
- Possible public art location(s), bench seating and grass areas on which to sit



Landscape Concept Plan



Additional Steps

- Discussions regarding License Agreement with SFID Staff for use of the property for improvement, maintenance and public use
- Additional coordination with SFID Staff on current and future construction of Pipeline and other CIP Projects
- Continue project design including landscaping and Irrigation plans
- Seek feedback/approval from the SFID Board and City Council



Questions/Comments

