

# CITY OF SOLANA BEACH

## COASTAL STORM DAMAGE REDUCTION PROJECT

---

# Project Update



US Army Corps  
of Engineers®  
Los Angeles District



December 13, 2023



# BEACH SAND PROJECT OVERVIEW

- Project is a partnership between City + State + Federal Agencies
- Project planning, environmental and permitting phase - 20 years
- One of the first entirely new federal beach sand projects in California
- USACE Project will create a new, 150-foot wide beach sand berm
- Volume of sand dredged is approximately 700,000 cubic yards
- Project footprint is approximately 7,200 feet long

# SOLANA BEACH & ENCINITAS NOURISHMENT FOOTPRINTS

Solana Beach Nourishment Footprint



Encinitas Nourishment Footprint



# SOLANA BEACH PROJECT OVERVIEW

- Sand will be placed from Tide Park stairs to southern City limits
- Sand source is from borrow site SO-5 (offshore San Dieguito River mouth)
- Additional renourishment events approximately every 10 years
- Renourishment volume = 290,000 cubic yards
- Final renourishment in 2074 (e.g., in 50 years)

# PROJECT FOOTPRINTS





# BEACH SAND PROJECT PHASING

Pipeline  
Installed December  
11, 2023

Sand Placement  
Starts Mid-January  
2024

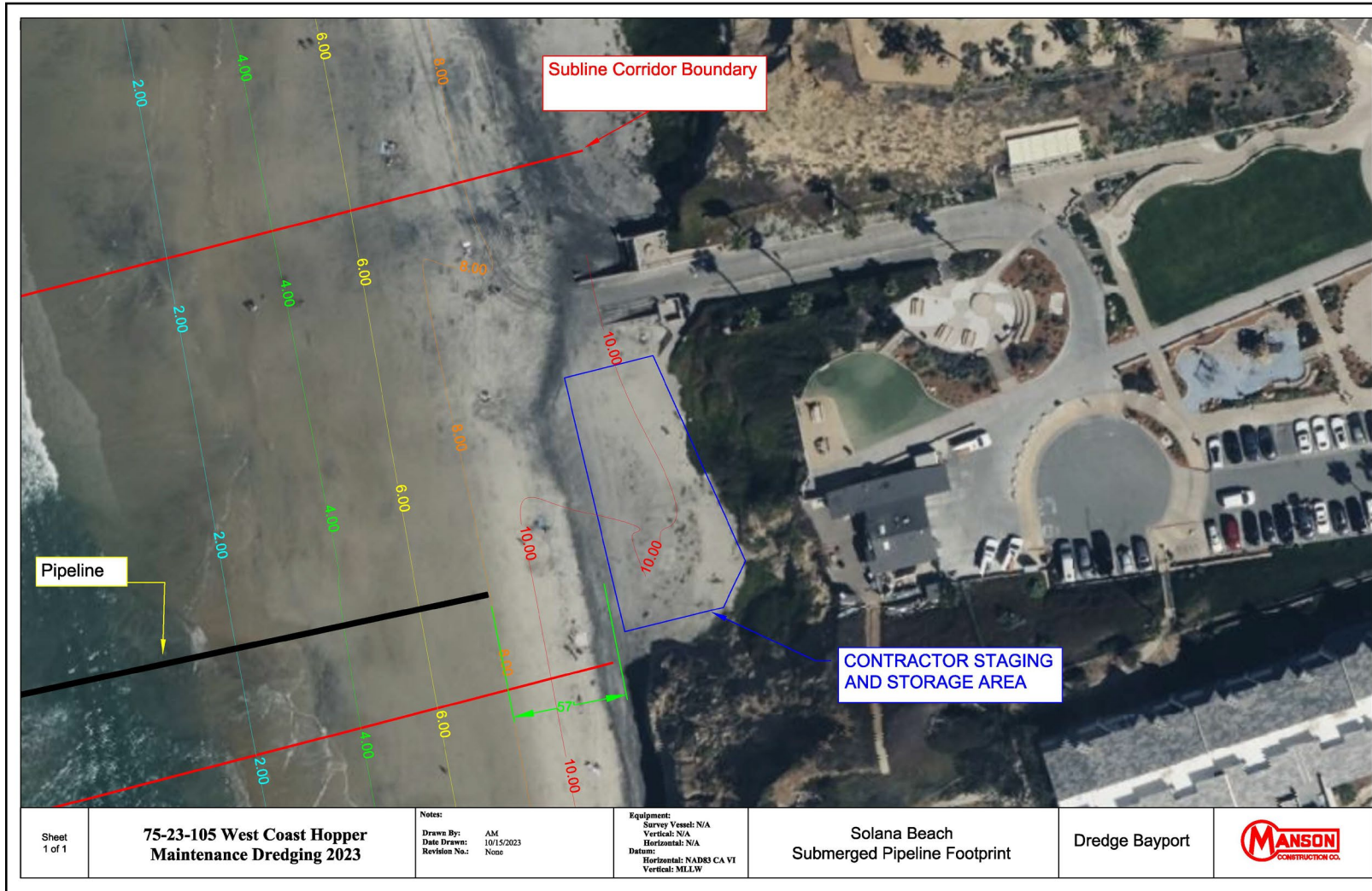
Construction will last  
approximately 60  
days

Dredging will occur  
24 hours a day / 7  
days a week

Shore equipment  
operates 12  
hours/day, 7 days  
week

Post-construction  
Wrap Up  
Mid-March 2024

# SOLANA BEACH SUBMERGED PIPELINE FOOTPRINT INSTALLED 12/11/23







# PIPELINE LANDING (SUBLINE INSTALL)



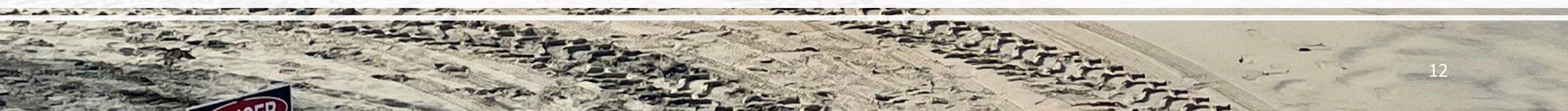
# PIPELINE LANDING (SUBLINE INSTALL)



# PIPELINE LANDING (SUBLINE INSTALL)



# PIPELINE LANDING (SUBLINE INSTALL)



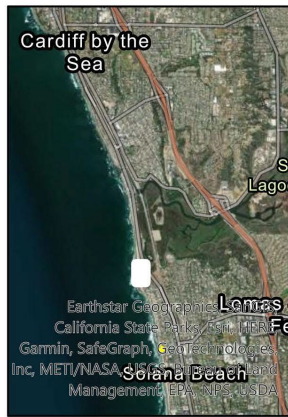
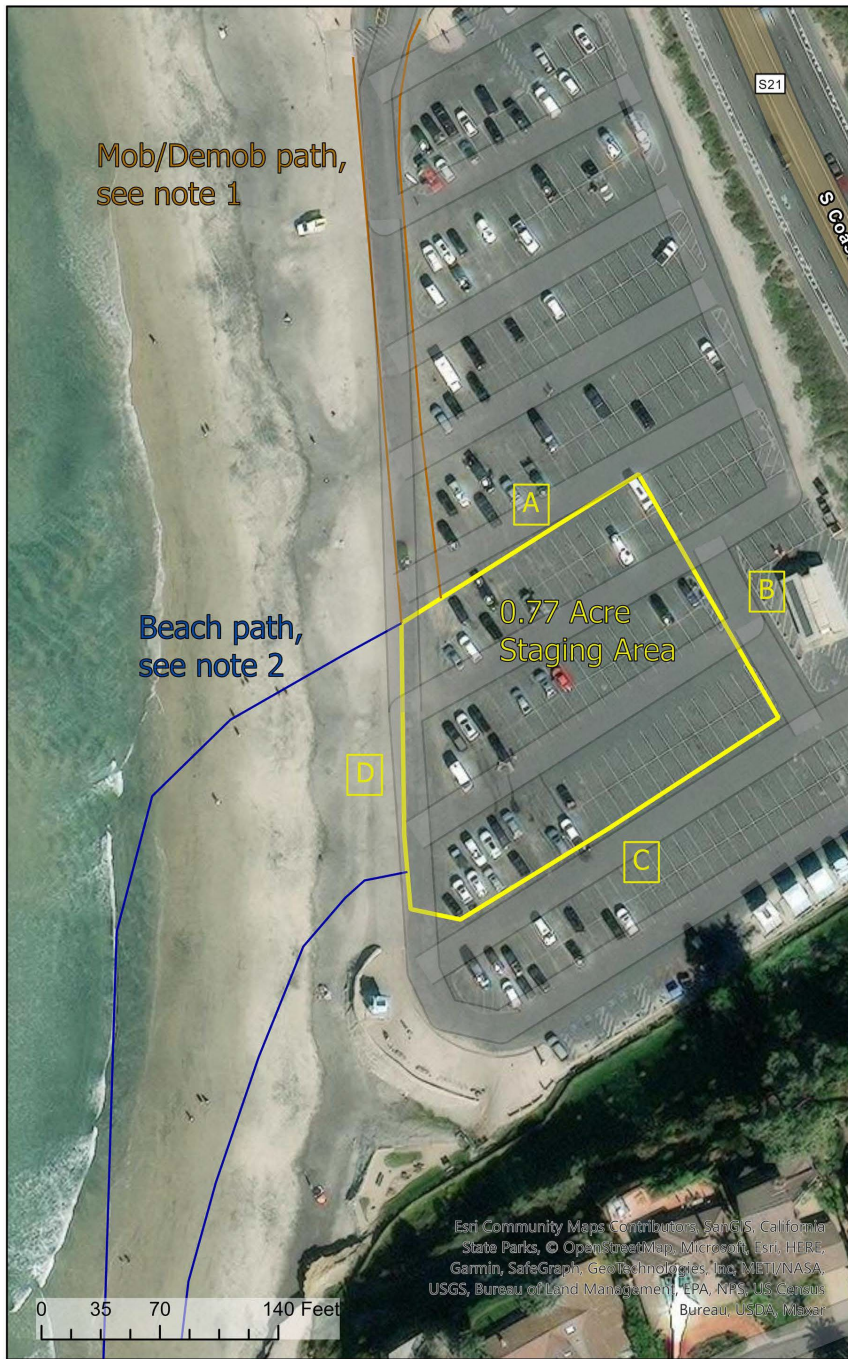
# PIPELINE LANDING (SUBLINE INSTALLED)

---



# NEXT STEPS AND SCHEDULE

- ✓ Set up construction staging areas first week of January 2024
- ✓ Beach sand placement anticipated in Mid-January 2024
- ✓ Starts after San Clemente Beach Sand Project Completed
- ✓ 60 days of active beach sand placement activities
- ✓ Solana Beach wrap up anticipated in Mid- March 2024
- ✓ Begin Encinitas after completion of Solana Beach Project



Notes:

1. Approximate mobilization/demobilization path (orange) will be utilized at the beginning and end of construction.
2. Approximate beach path (blue) will be utilized periodically by equipment transiting to the Solana Beach construction area.

S. Cardiff Staging Area  
Approximate Dimensions:

- A - 165 feet
- B - 165 feet
- C - 230 feet
- D - 175 feet



# STATE PARKS

## SEASIDE

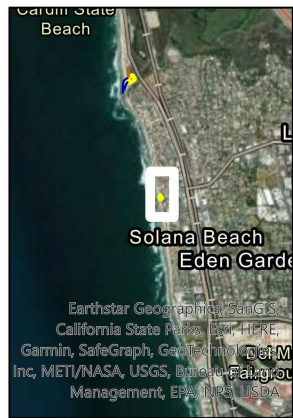
### PARKING LOT

### STAGING AREA

**EXAMPLE:  
EQUIPMENT  
STORAGE AT  
CARDIFF  
STATE PARKS  
PARKING LOT**







# FLETCHER COVE STAGING AREA

Fletcher Cove Staging Area  
Approximate Dimensions:

- A - 50 feet
- B - 130 feet
- C - 60 feet
- D - 130 feet





## EXAMPLE: CONSTRUCTION PHASE

2019 05 07

# EXAMPLE: CONSTRUCTION PHASE



# PUBLIC SAFETY PROGRAM



**Public signs to be posted at multiple locations**



**Equipment moving along beach  
will have spotters at all times**



**Temporary construction  
fencing around dredge  
discharge area**



**No public access in active  
sand placement areas**

# PUBLIC SAFETY CLOSURE

**CLOSURE ESTIMATED UNTIL MARCH 2024**

## SUBMERGED PIPELINE



**U.S. ARMY**



**US Army Corps  
of Engineers.**  
Los Angeles District



We appreciate your cooperation while we work to restore the beach!

### **Call 911 in case of an emergency**

Solana Beach Marine Safety: (858) 720-4444  
City of Solana Beach General Info: (858) 720-2440  
US Army Corps of Engineers (USACE): (858) 242-2834

Scan QR code for  
more information  
on this project!



# **PUBLIC SAFETY CLOSURE**

**CLOSURE ESTIMATED UNTIL MARCH 2024**

# **SUBMERGED PIPELINE**



We appreciate your cooperation  
while we work to restore the beach!

**Call 911 in case of an emergency**

City of Solana Beach General Info: (858) 720-2440

Solana Beach Marine Safety: (858) 720-4444

US Army Corps of Engineers (USACE): (858) 242-2834



Scan QR code for  
more information  
on this project!

# PUBLIC OUTREACH & COMMUNICATIONS

- Public Outreach & Communications
  - Public signs posted by City, USACE & Contractor
  - Beach access limitations during active construction phase
  - Temporary beach closures in work zone to protect public safety
  - Project information & construction schedule communicated:
    - ✓ @ Council Meetings
    - ✓ Public Noticing onsite
    - ✓ Press Releases & E-Blasts
    - ✓ QR Code
    - ✓ Dedicated Project Website
      - ✓ <https://www.cityofsolanabeach.org/beachsand>
    - ✓ Social Media posts



# Solana Beach Sand Project Sand Placement and Area Closures

December 2023 - March 2024

The U.S. Army Corps of Engineers is working closely with the Cities of Solana Beach and Encinitas in a joint effort to reduce bluff and beach erosion along this stretch of coast.

Over 700,000 cubic yards of sand will be dredged from a borrow area approximately 3,500 feet offshore of the San Dieguito Lagoon, then pumped ashore using a submerged pipeline extending onto the beach near Fletcher Cove. The sand will then be pumped along the beach and shaped into a berm by earthmoving equipment.

During construction, beach access will be restricted to protect public safety. In addition, portions of the South Cardiff Seaside parking lot and Fletcher Cove Beach will be closed for project staging.

We appreciate your cooperation while we work to restore the beach!



**Project Contacts:** Contact 911 in case of an emergency

US Army Corps of Engineers (USACE) Contacts:

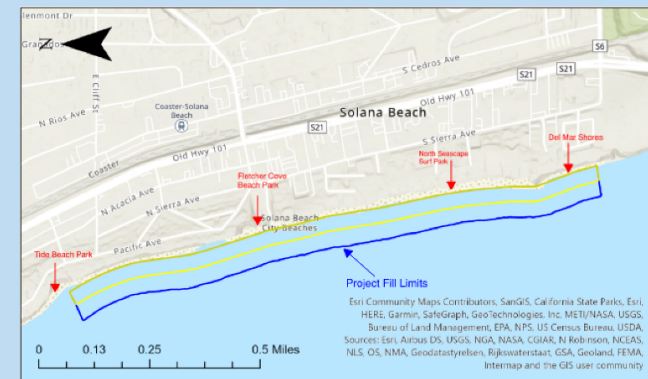
Nathan Miller, (360) 899-8223;  
[nathan.c.miller@usace.army.mil](mailto:nathan.c.miller@usace.army.mil)

Dan Heyenbruch, (858) 242-2834  
[daniel.b.heyenbruch@usace.army.mil](mailto:daniel.b.heyenbruch@usace.army.mil)

City of Solana Beach Contacts:

Joe Lim, Community Development Director  
(858) 720-2440; [beachsand@cosb.org](mailto:beachsand@cosb.org)

Solana Beach Marine Safety  
(858) 720-4444



Solana Beach Nourishment Footprint





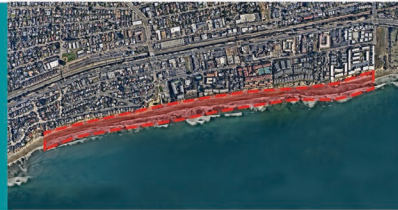


CITY OF SOLANA BEACH  
**SAN DIEGO COUNTY SHORELINE PROJECT**  
 (SAND REPLENISHMENT) | DECEMBER 2023 - MARCH 2024

The City's public beaches contribute significantly to the quality of life for residents and visitors alike. Additionally, beach sand functions as a natural protective buffer from winter storm waves. Beach sand is considered natural coastal infrastructure and like other City infrastructure requires regular and ongoing maintenance efforts to perform at its best. The sandy beach provides a multitude of benefits including shoreline protection, recreation, and environmental benefits.

**PROJECT DESCRIPTION**

- Project will create almost 25 new acres of beach for the public to enjoy
- Project will create a new, 150-foot wide, 7,200 foot long beach sand berm
- Volume of sand added to the beach is 700,000 cubic yards
- Sand will be placed between along the entire length of the City
- Sand source is offshore of the mouth of the San Dieguito River
- Sand renourishment cycle approximately every 10 years
- Final renourishment event would occur in 2074
- 2.1 Million cubic yards will be placed over the 50-year period



**WHAT TO EXPECT DURING CONSTRUCTION**

- Construction hours are from 7:00 AM to 7:00 PM, seven days per week for approximately 60 days
- Increased heavy equipment and vehicles on the beach with loud noises
- Temporary beach closures during active sand placement activities
- Fencing to protect public safety
- Water turbidity (suspended sediments)
- Extra bird activity (shorebirds love to forage in the dredged sandy material)
- Clean up will take a few weeks to remove all equipment and materials



We are committed to completing the project as quickly as possible; however, the timeframe could change due to inclement weather or other unforeseen circumstances. Thank you for your patience and cooperation while we rebuild the City's beaches!



**CONTACT US**  
 beachesand@cosb.org  
 (858) 720-2440



# BEACH SAND PROJECT FLYER

# CITY WEBSITE: PROJECT ANNOUNCEMENT



## City Announces the Start of the Beach Sand Project Pre-Construction Mobilization

HOME > NEWS AND ANNOUNCEMENTS > CITY ANNOUNCES THE START OF THE BEACH SAND PROJECT PRE-CONSTRUCTION MOBILIZATION



Date: Nov 30, 2023

Category: [News & Announcements](#)

The US Army Corps of Engineers (USACE) has advised the City that the USACE and their contractors, Manson Construction, will begin the process of restoring the City's beach beginning as soon as Monday December 4, 2023. The sandy beach functions as critical, natural infrastructure and is an important public recreational amenity requiring regular maintenance to perform optimally.

The first deliveries of sand are anticipated to arrive as early as Mid-December and are dependent on the schedule and timing of San Clemente + USACE beach sand project. Before the sand can be delivered, the USACE and their contractors need to get the dredge pipeline into place. The pipeline will be located in the water and partially onto the beach so that the dredge can connect to this pipeline and deliver sand. This pre-construction effort will last about one day and will include both a small flotilla of approximately five ships and tug boats and landside mobilization of vehicles and heavy equipment to get the dredge pipeline into place at Fletcher Cove.

Public safety is the highest priority, therefore, the beach and water will be temporarily closed in the vicinity of the dredge pipeline. Signs will be posted regarding the temporary beach closure required to ensure people keep clear of the dredge pipeline. The City appreciates the cooperation of the community while we restore our highly valued public beaches.

## Sand Placement and Area Closures

Solana Beach



January – March 2024

The U.S. Army Corps of Engineers is working closely with the Cities of Encinitas and Solana Beach in a joint effort to reduce bluff and beach erosion along this stretch of coast.

Over 700,000 cubic yards of sand will be dredged from a borrow area approximately 3,500 feet offshore of the San Dieguito Lagoon, then pumped ashore using a submerged pipeline extending onto the beach near Fletcher Cove. The sand will then be pumped along the beach and shaped into a berm by earthmoving equipment.

During construction, beach access will be restricted to protect public safety. In addition, portions of the South Cardiff Seaside parking lot and Fletcher Cove Beach will be closed for project staging.

Project Contacts:

Manson Construction:

USACE Contacts:

City of Solana Beach Contacts:



Solana Beach Nourishment Footprint



**CONTACT US**  
Solana Beach City Hall  
635 S. Highway 101,  
Solana Beach, CA 92075  
858-720-2400  
Monday - Thursday  
7:30 am - 5:30 pm  
Every Other Friday  
8:00 am - 5:00 pm

**STAY CONNECTED**  
E-Newsletter Signup  
Facebook  
Twitter  
Instagram

**HELPFUL LINKS**  
Upcoming Events  
Meetings  
Council Meetings & Public Workshops  
Job Opportunities  
Website Disclaimer of Liability





# THANK YOU FOR YOUR TIME!

[Solana Beach Shoreline Project \(Sand Replenishment\) |  
Solana Beach \(cityofsolanabeach.org\)](#)