

# City of Solana Beach OVERLAY MAP

Last Update July 2007

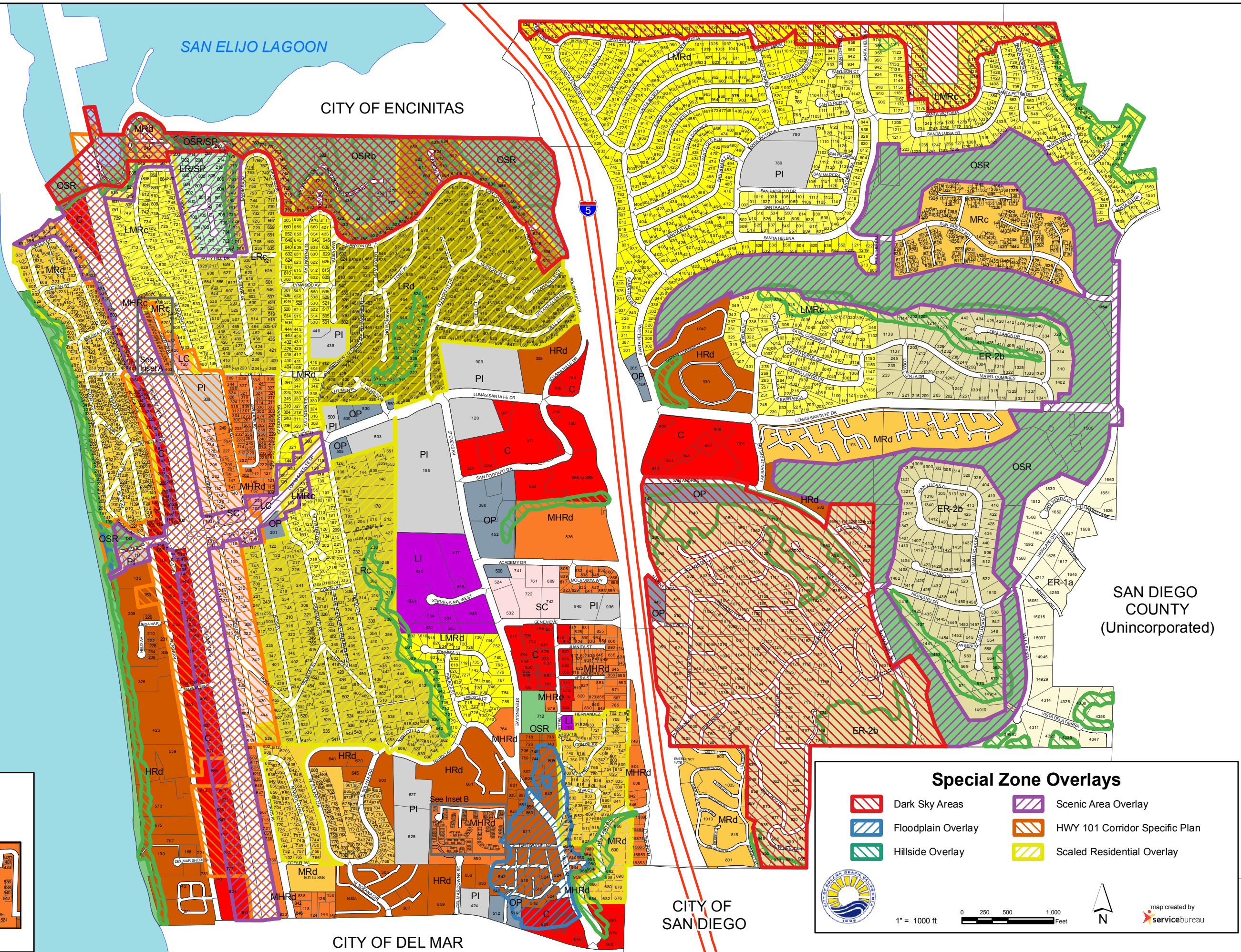
<b>ER</b>	<b>Estate Residential</b> 1 DU/Acre
<b>ER-2</b>	<b>Estate Residential</b> 1-2 DU/Acre
<b>LRc</b>	<b>Low Residential</b> 3 DU/Acre
<b>LRd</b>	<b>Low Residential</b> 4 DU/Acre
<b>LMRc</b>	<b>Low-Medium Residential</b> 5 - 7 DU/Acre
<b>LMRd</b>	<b>Low-Medium Residential</b> 8 - 12 DU/Acre
<b>MR</b>	<b>Medium Residential</b> 13-20 DU/Acre
<b>MHR</b>	<b>Medium-High Residential</b> 21-30 DU/Acre
<b>HR</b>	<b>High Residential</b> 31-40 DU/Acre
<b>SC</b>	<b>Special Commercial</b>
<b>LC</b>	<b>Light Commercial</b>
<b>C</b>	<b>General Commercial</b>
<b>LI</b>	<b>Light Industrial</b>
<b>OP</b>	<b>Office Professional</b>
<b>PI</b>	<b>Public / Institutional</b>
<b>ROW</b>	<b>Road Right-Of-Way</b>
<b>LR/SP</b>	<b>Low Residential / Specific Plan</b>
<b>OSR/SP</b>	<b>Open Space Recreation / Specific Plan</b>
<b>OSR</b>	<b>Open Space / Recreation</b>

**Inset A**

**Inset B**

1" = 580 ft

0 125 250 500 Feet



### Special Zone Overlays


1" = 1000 ft

0 250 500 1,000 Feet

map created by servicebureau