










# LEGEND

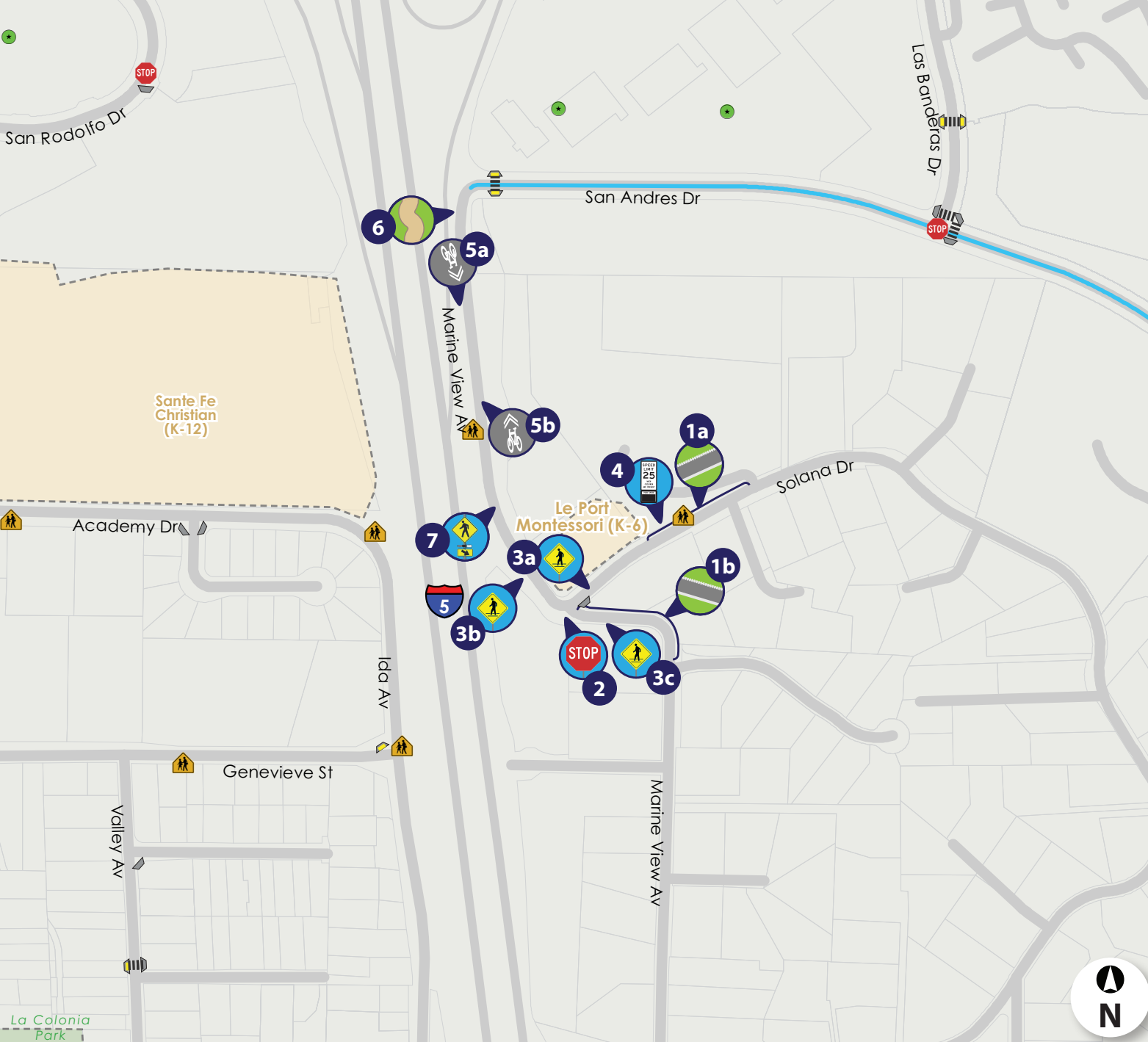
## Existing Infrastructure

-  ADA Compliant Ramp
-  Ramp
-  Marked Crosswalk
-  All-Way Stop
-  Bike Parking
-  School Signage
-  School Site
-  Park
-  Class II Bike Lane

## Recommendations

- 1  Construct Sidewalk
- 2  Make All-Way Stop\*  
\*Subject to engineering analysis
- 3  Install Watch for Pedestrians Signage
- 4  Place Speed Feedback Signage
- 5  Install Shared Lane Marking (Class III)
- 6  Construct Decomposed Granite Path
- 7  Install Rectangular Rapid-Flashing Beacons

Feature	Qt./Mi.
Sidewalk	675 ft.
All-Way Stop	1
Pedestrian Signage	3
Speed Feedback Signage	1
Shared Lane Marking	12
Decomposed Granite Path	300 ft.
Rectangular Rapid-Flashing Beacon	1



# Le Port Montessori - SRTS Recommendations