

# **Marine Safety Center Design Update**

---

**CITY COUNCIL MEETING**

**OCTOBER 14, 2010**

# Background

---

- May 2017 – Needs assessment and feasibility study
- October 2018 – PSA with domusstudio architecture
- February 2019 – Community Workshop
- November 2019 – three design options presented to the City Council

# Previous Council Direction

---

- Pursue the above-ground option for operational functionality
- Avoid splitting buildings
- Reduce bulk and scale to the extent possible
- Need for observation of the beach and the park
- Tuck new building into the southern slope to the maximum extent possible

# Previous Council Direction (cont.)

---

- Desire for permanent tower at the bottom of the beach access ramp
- Improve access from the new building to the beach
- Preserve existing public views to the greatest extent possible
- Continue to involve the community

# Updated Design from Previous Council Meeting

---

- Building pushed into the southerly slope
- Combined into one building to increase efficiency
- Incorporated a new outdoor deck allowing full view of the park
- Includes three different roof options
- South facing roof for to allow for solar panels
- Functional areas

# Preliminary Square Footage Breakdown of Functional Areas

Solana Beach Marine Safety Center	
Room Name	Area (SF)
Observation	183
Sheriff's	67
Open Office	447
Captain's Office	145
Meeting Room	159
Storage	26
First Aid	129
Lobby	140
Restrooms	79
Hall	294
Kitchen	395
Closet	43
Locker Room	337
Locker Room	325
Public Works Storage/Work Station	114
Garage	1,018
Jr. Guard	291
<b>Total</b>	<b>4,192</b>

# Direct Access to the Beach

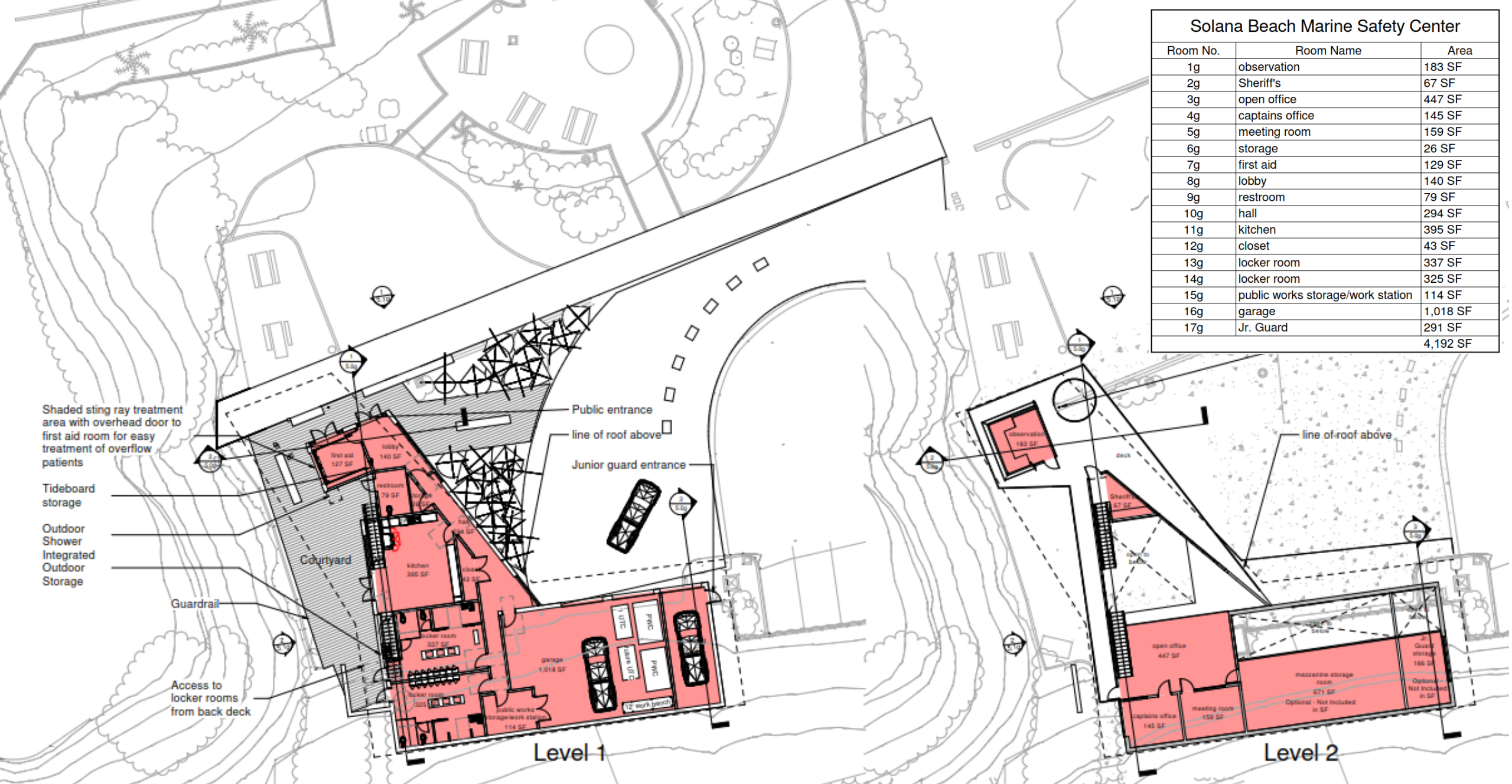
---

## PROS:

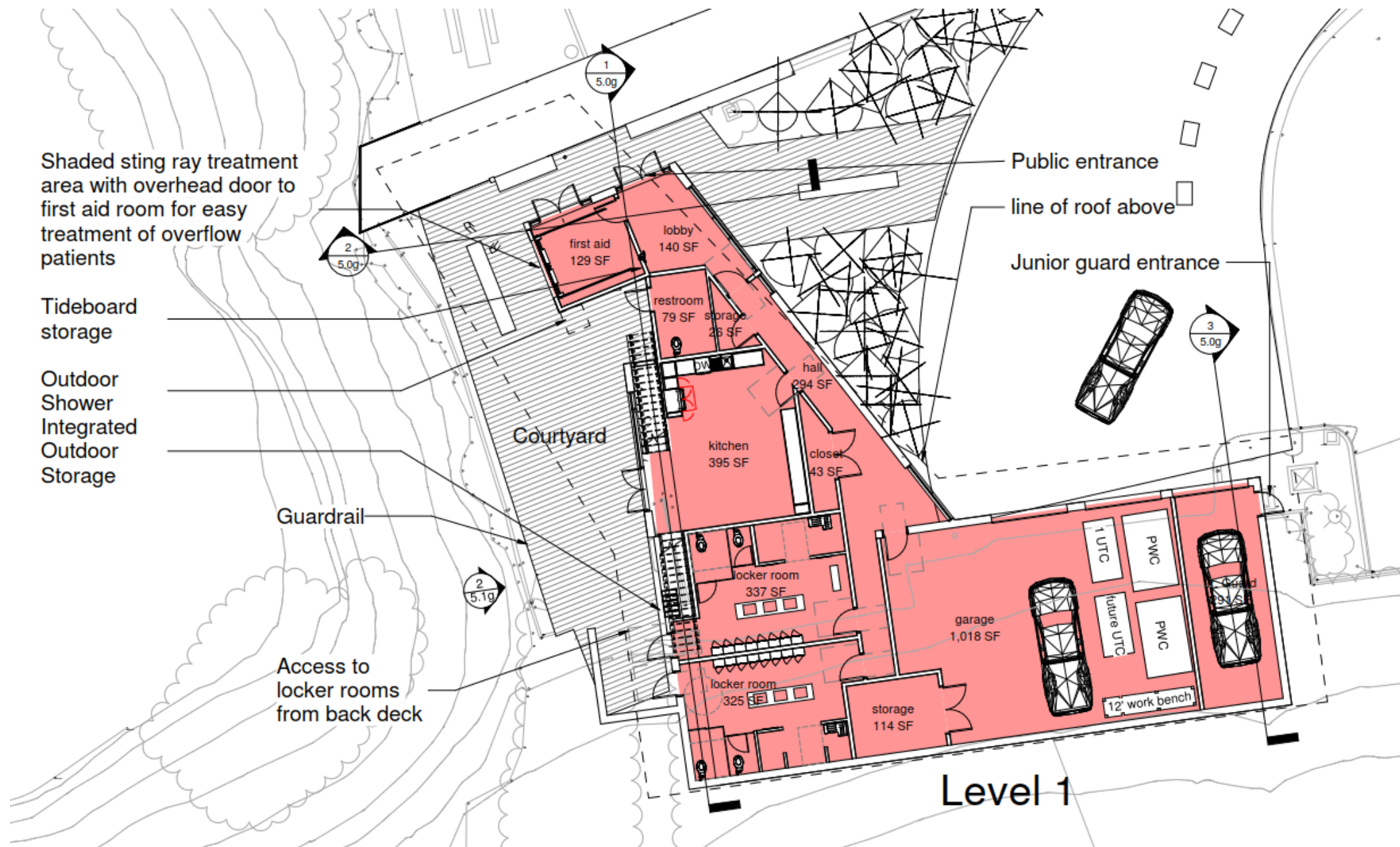
- Provides accessible beach access
- Provides direct/shortcut beach access for Lifeguards
- Improves operations/enhances public safety
- Provides bluff protection
- Provides protection for the proposed building

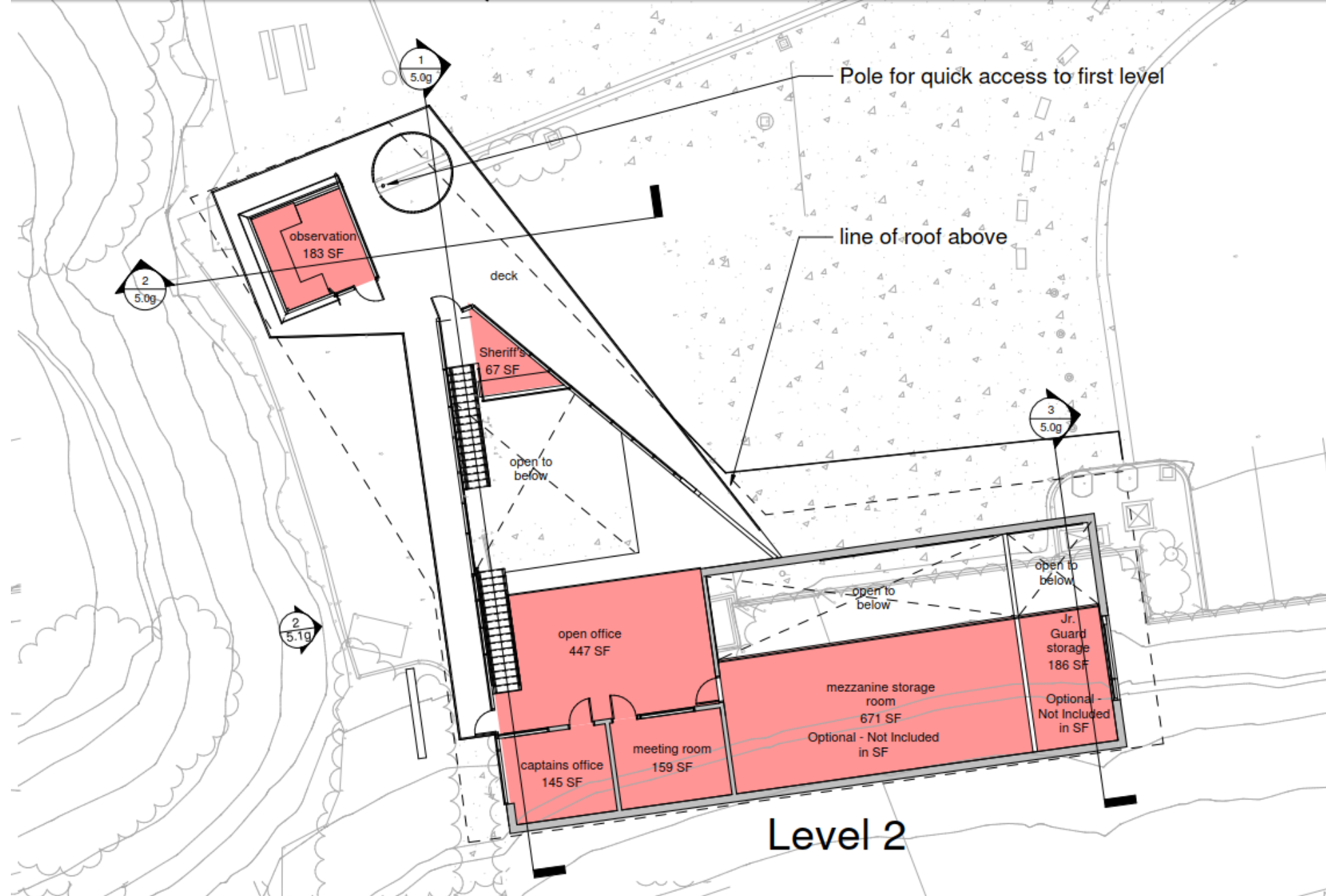
## CONS:

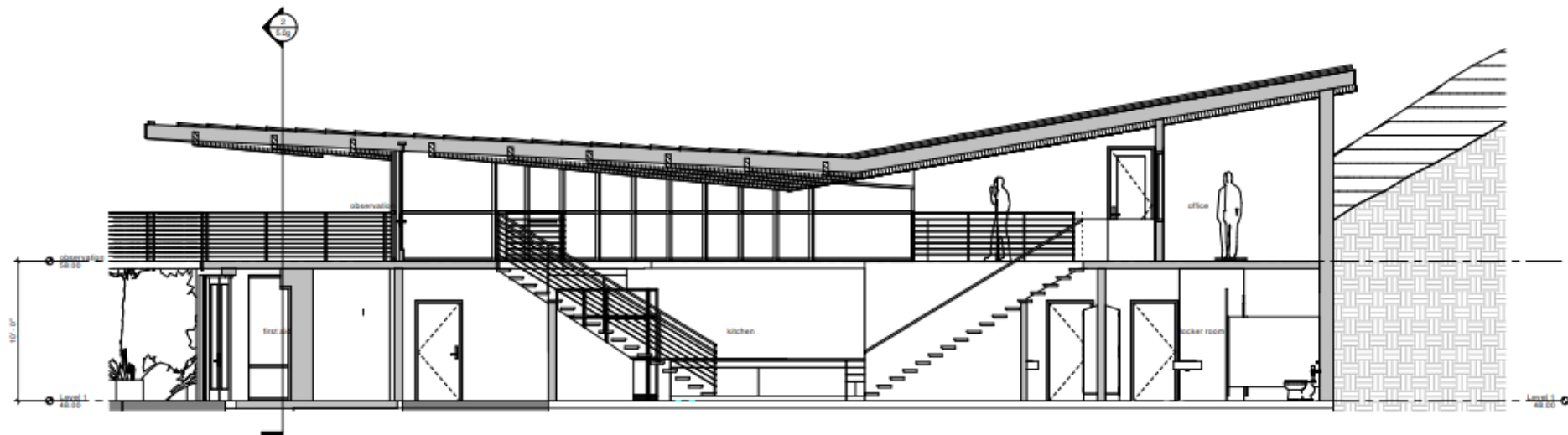
- Would require construction on the bluff which could be problematic and expensive
- Would cost more for design and construction



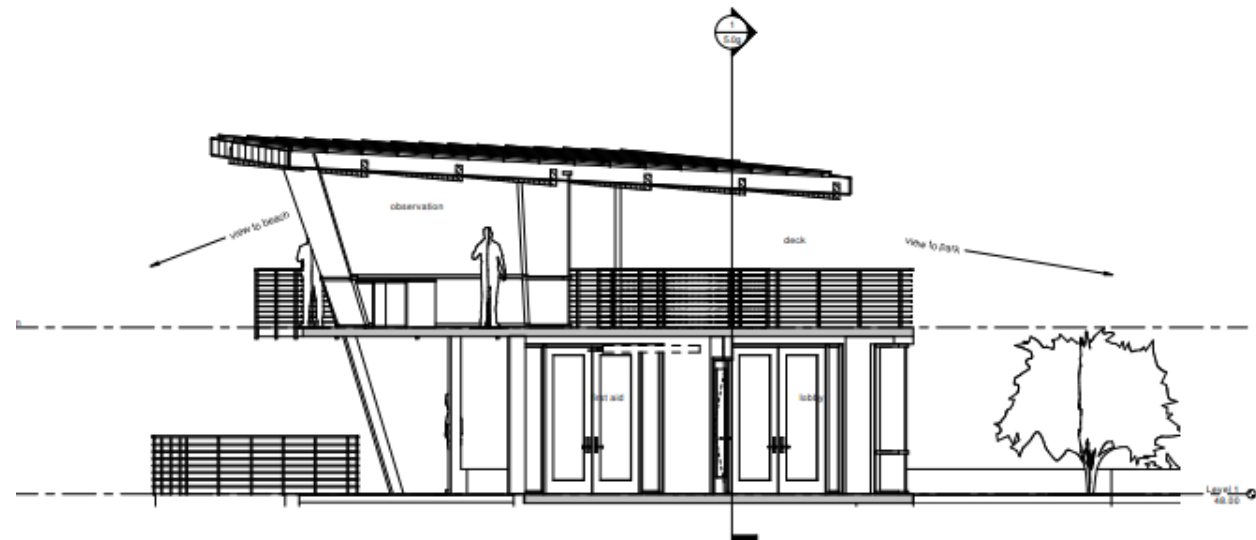




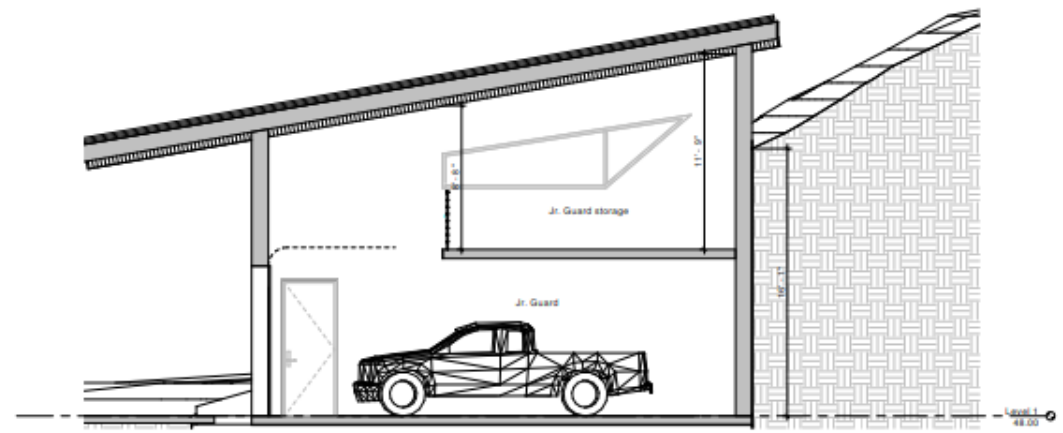




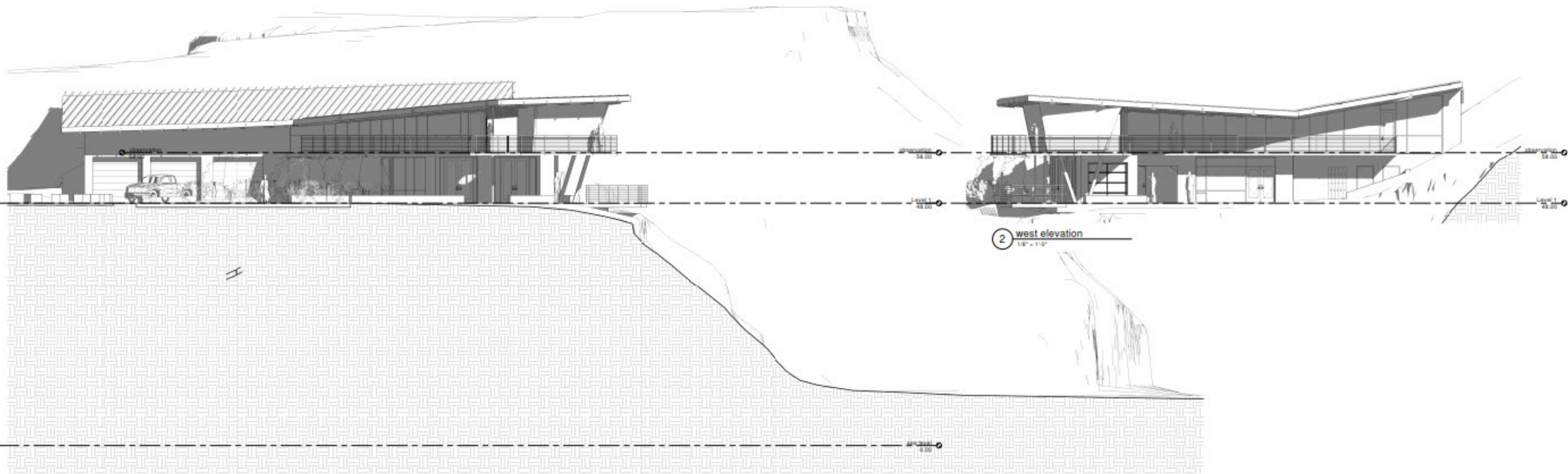
1 north south section at stairways  
1/4" = 1'-0"



2 east west section at observation  
1/4" = 1'-0"



3 section at Jr. Guard storage  
1/4" = 1'-0"

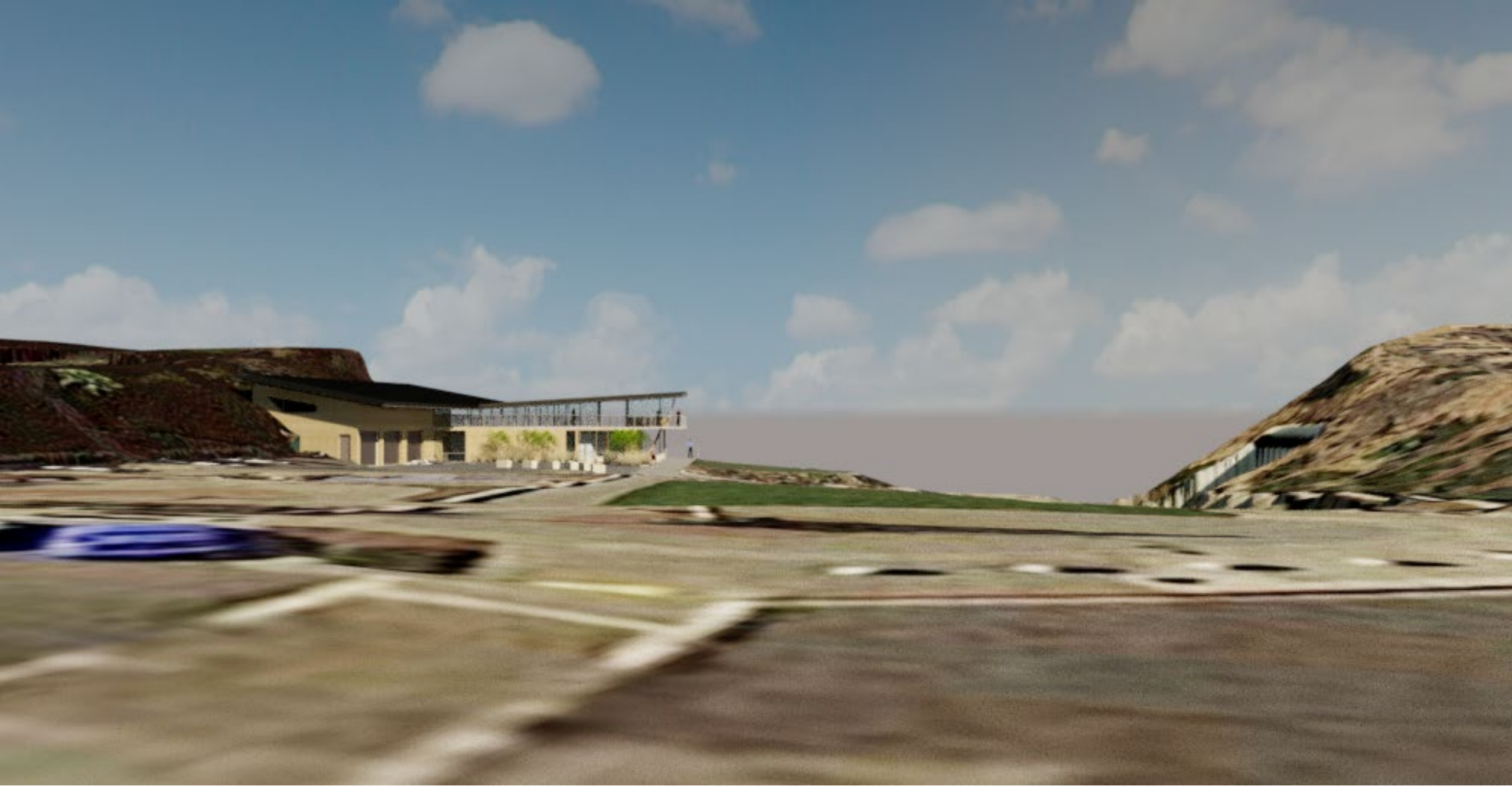


1 north elevation  
1/8" = 1'-0"

2 west elevation  
1/8" = 1'-0"





















































# Questions/Direction