



Santa Helena Neighborhood Trail

Community Meeting

October 21, 2021

Background

- Santa Helena Neighborhood Trail Project was added to the City's Work Plan 3 years ago
- Project includes conversion of unused right-of-way in the northerly segment of Santa Helena to a neighborhood trail
- Staff issued a Request for Proposals (RFP) to hire a consultant
- 3 proposals were received in response to the RFP
- MW Peltz + Associates was selected
- MW Peltz is a local firm experienced in public project design
- MW Peltz worked on Fletcher Cove Park, Highway 101 Master Plan and a number of volunteer projects

Existing Conditions

at Sun Valley – looking north



10/21/2021 14:19

Existing Conditions

between Sun Valley & Santa Victoria – looking north



10/21/2021 14:19

Existing Conditions

between Sun Valley & Santa Victoria – looking north



10/21/2021 14:20

Existing Conditions

between Sun Valley & Santa Victoria – looking north



Existing Conditions

near Santa Victoria – looking north



10/21/2021 14:21

Existing Conditions

at Santa Victoria – looking northwest



10/21/2021 14:21

Existing Conditions

between Santa Victoria & San Lorenzo – looking north



10/21/2021 14:22

Existing Conditions

between Santa Victoria & San Lorenzo – looking north



10/21/2021 14:23

Existing Conditions

north of San Lorenzo – looking north



10/21/2021 14:23

Existing Conditions

north of San Lorenzo – looking north



10/21/2021 14:24

Discussion

Staff provided guidelines to the consultant consistent with the City Council's direction during Work Plan discussion:

- Provide a pedestrian-friendly environment
- Reduce vehicle speeds without compromising the roadway capacity
- Support the City's Climate Action Plan

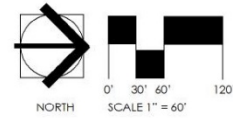
Staff also organized a focus group consisting of local HOA representatives and BikeWalkSolana to provide input on the project

Focus Group Recommendations

- Location of the new facility (which sides of the street)
- Aesthetics
- Functionality
- Compatibility with the adjacent community and lagoon environment
- Implementation of traffic calming measures
- Sensitivity to community, particularly to the adjacent residents
- Develop relationship with the community to possibly share resources (such as landscape maintenance and irrigation)



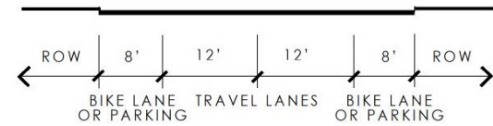
PLAN VIEW



SECTION SOUTH OF SANTA VICTORIA



SECTION NORTH OF SANTA VICTORIA



ROAD SECTION



GREENWAY SECTION

CONCEPTUAL PLAN

SANTA HELENA COMMUNITY TRAIL

CITY OF SOLANA BEACH

JULY 11, 2019





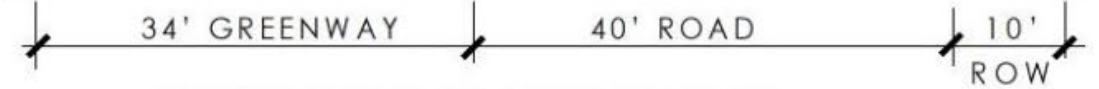
South of Santa Victoria



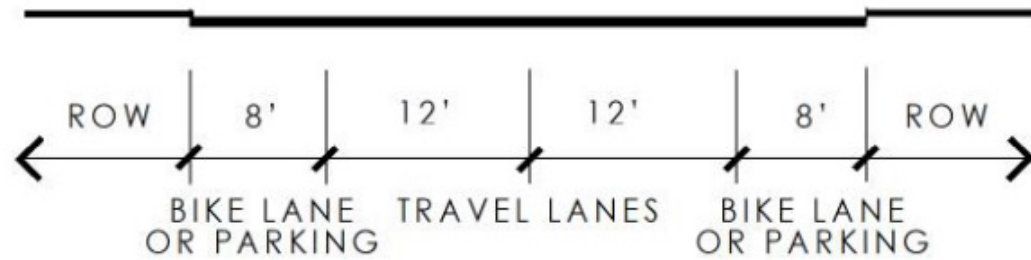
North of Santa Victoria



SECTION SOUTH OF SANTA VICTORIA



SECTION NORTH OF SANTA VICTORIA



ROAD SECTION



GREENWAY SECTION

City Council Meeting

March 10, 2020

- Construct the trail on east side of the street south of Santa Victoria and on the west side of the street north of Santa Victoria
- Be mindful of proximity of the trail to houses north of Santa Victoria
- Make the trail aesthetically pleasing
- Include seating for rest areas
- Do not include exercise equipment

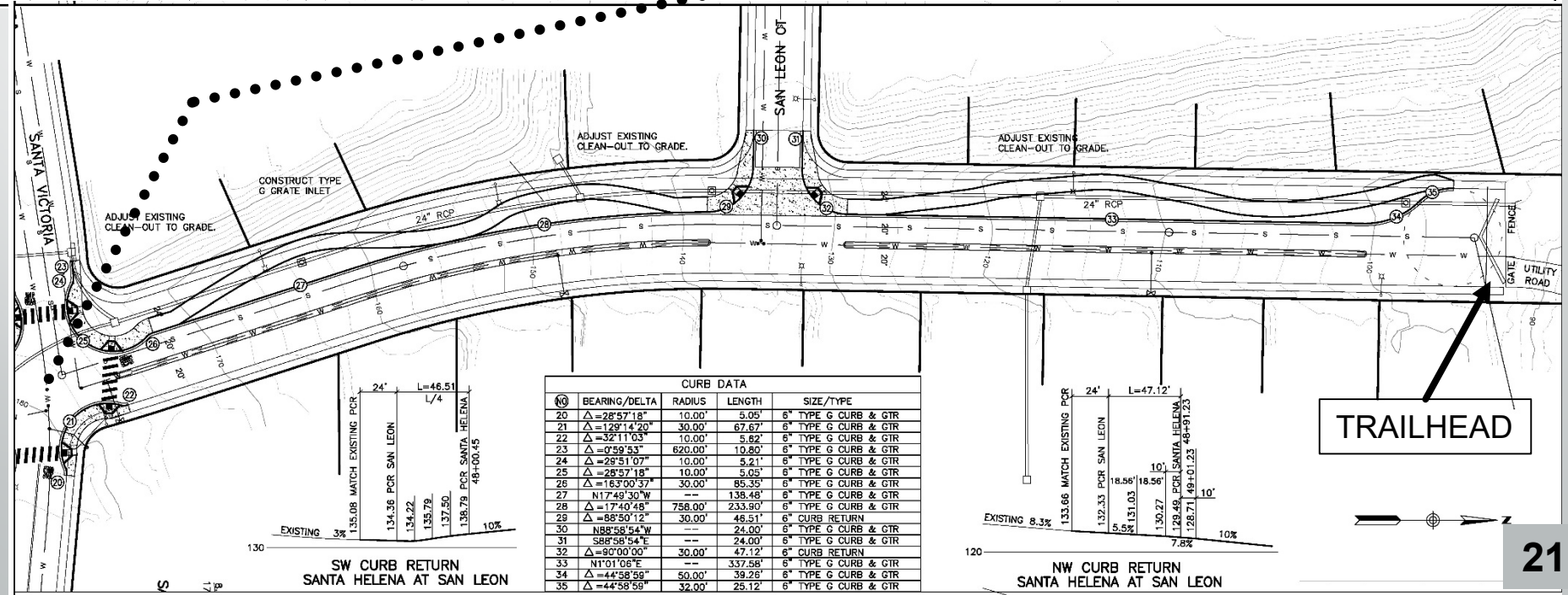
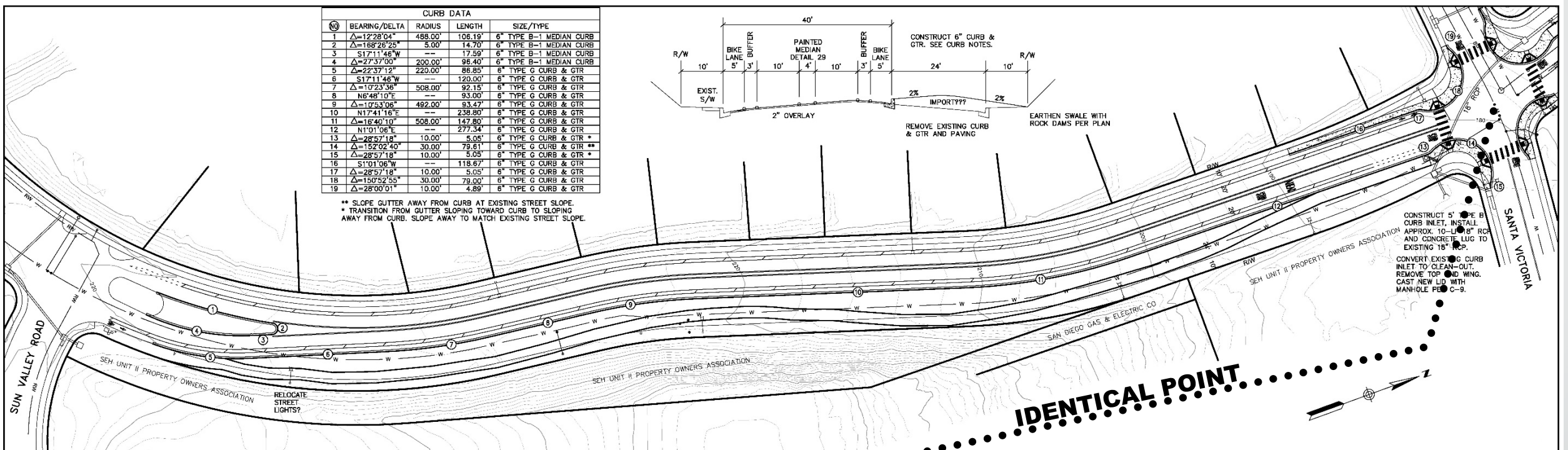
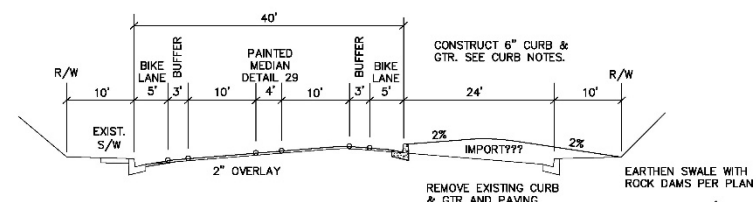
City Council Meeting

March 10, 2020 (cont)

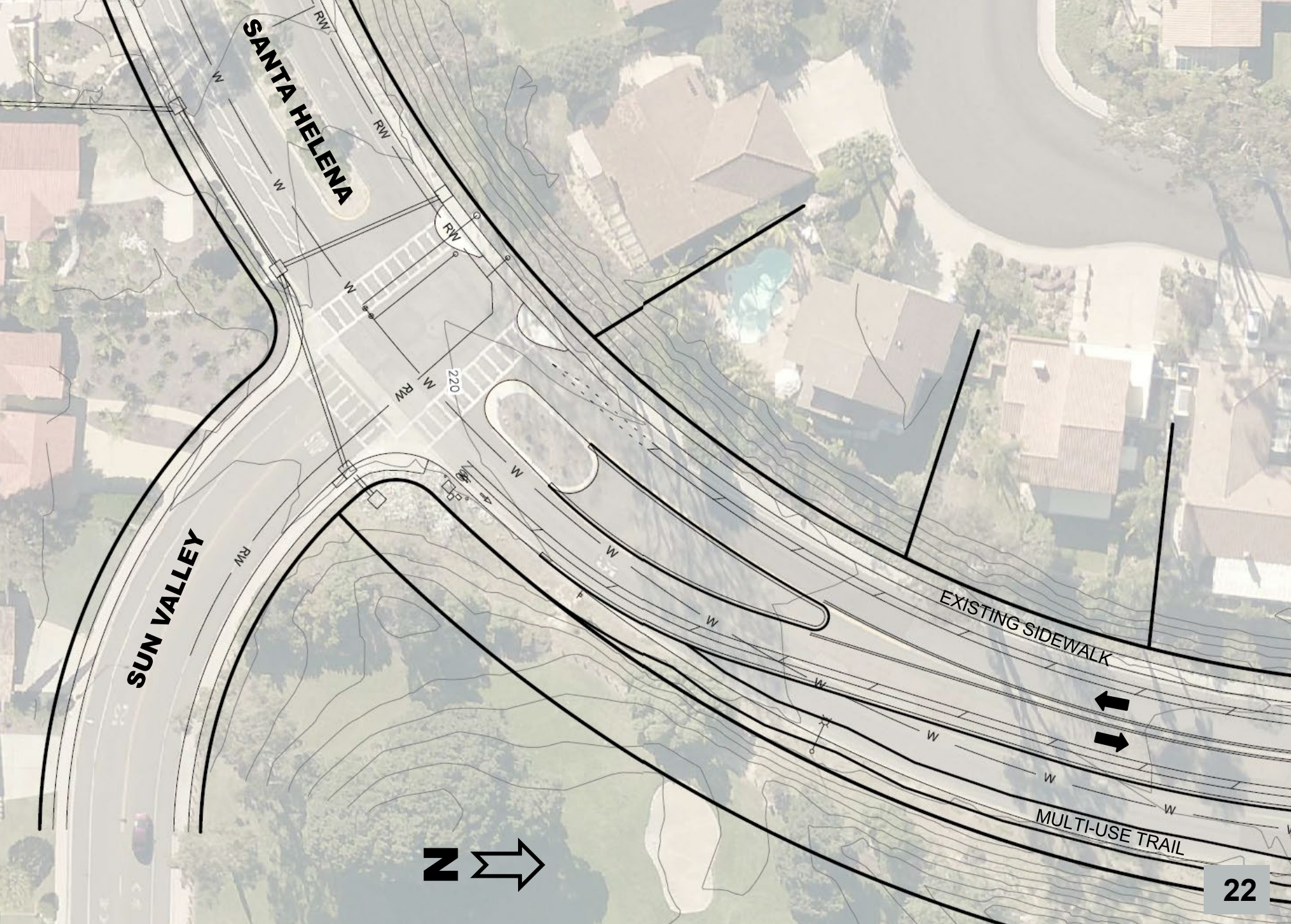
- Include trash cans and dog bag dispensers
- Use drought-tolerant landscaping
- Include traffic calming measures
- Include pedestrian crossing at the Santa Helena/Santa Victoria intersection

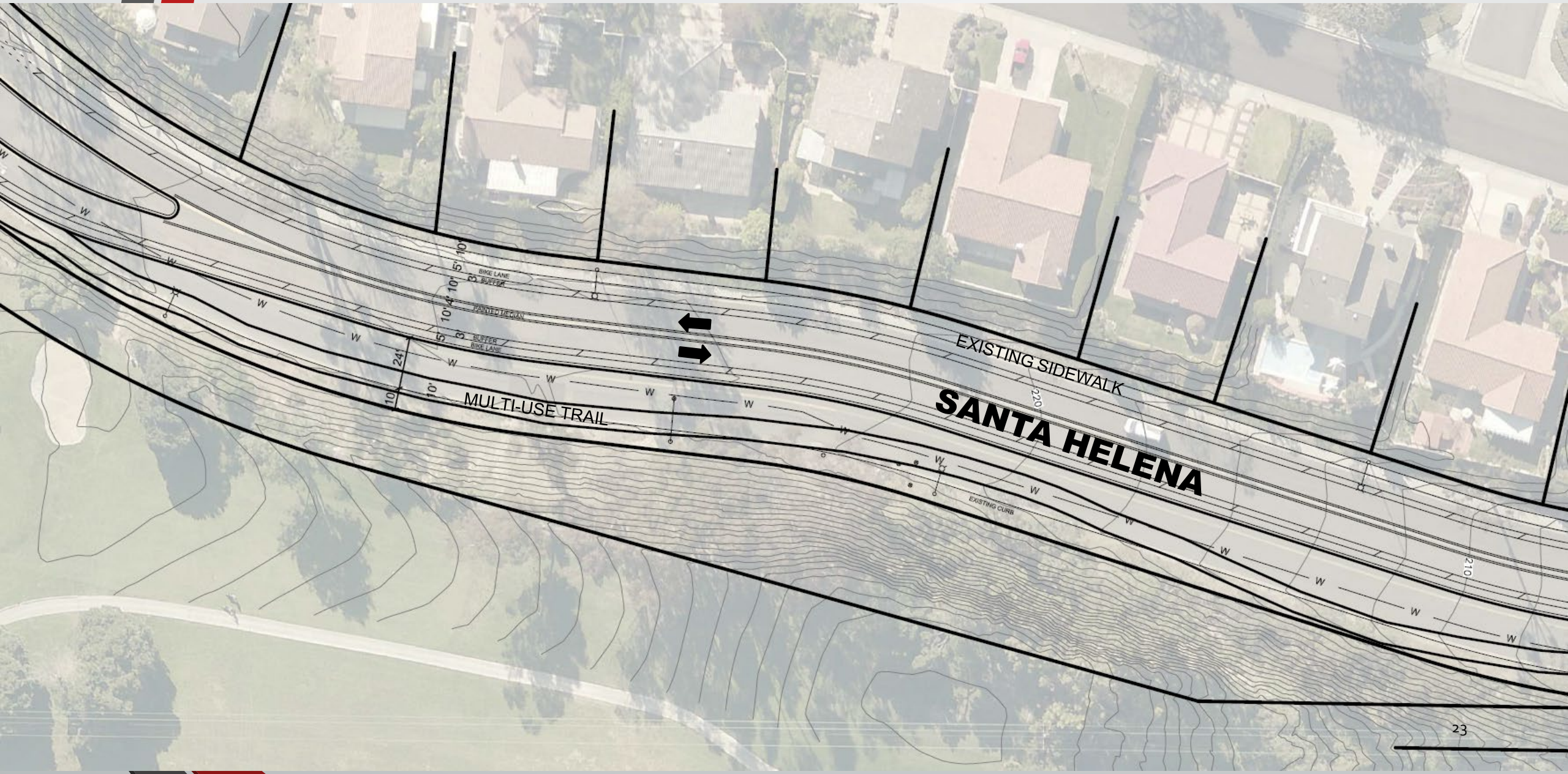
CURB DATA					
NO	BEARING/DELTA	RADIUS	LENGTH	SIZE/TYPE	
1	Δ=12°28'04"	488.00'	106.19'	6" TYPE B-1 MEDIAN CURB	
2	Δ=168°26'25"	5.00'	14.70'	6" TYPE B-1 MEDIAN CURB	
3	S17°11'46"W	--	17.59'	6" TYPE B-1 MEDIAN CURB	
4	Δ=27°37'00"	200.00'	96.40'	6" TYPE B-1 MEDIAN CURB	
5	Δ=23°37'12"	220.00'	86.85'	6" TYPE G CURB & GTR	
6	S17°11'46"W	--	120.00'	6" TYPE G CURB & GTR	
7	Δ=10°23'36"	508.00'	92.15'	6" TYPE G CURB & GTR	
8	N6°48'10"E	--	93.00'	6" TYPE G CURB & GTR	
9	Δ=10°53'06"	482.00'	93.47'	6" TYPE G CURB & GTR	
10	N17°41'16"E	--	238.80'	6" TYPE G CURB & GTR	
11	Δ=16°40'10"	508.00'	147.80'	6" TYPE G CURB & GTR	
12	N1°01'06"E	--	277.34'	6" TYPE G CURB & GTR	
13	Δ=28°57'18"	10.00'	5.05'	6" TYPE G CURB & GTR *	
14	Δ=152°02'40"	30.00'	79.61'	6" TYPE G CURB & GTR **	
15	Δ=28°57'18"	10.00'	5.05'	6" TYPE G CURB & GTR *	
16	S1°01'06"W	--	118.67'	6" TYPE G CURB & GTR	
17	Δ=28°57'18"	10.00'	5.05'	6" TYPE G CURB & GTR	
18	Δ=150°52'55"	30.00'	79.00'	6" TYPE G CURB & GTR	
19	Δ=28°00'01"	10.00'	4.89'	6" TYPE G CURB & GTR	

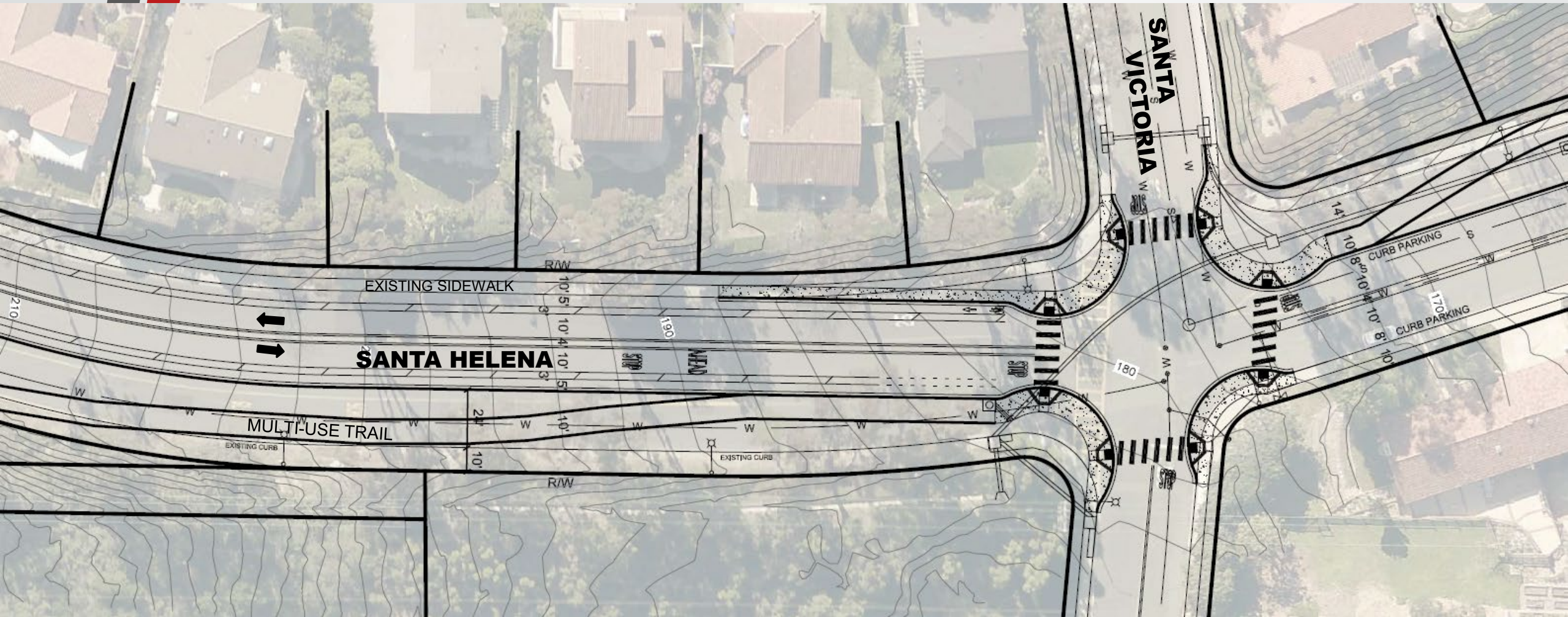
** SLOPE GUTTER AWAY FROM CURB AT EXISTING STREET SLOPE.
 * TRANSITION FROM GUTTER SLOPING TOWARD CURB TO SLOPING AWAY FROM CURB. SLOPE AWAY TO MATCH EXISTING STREET SLOPE.

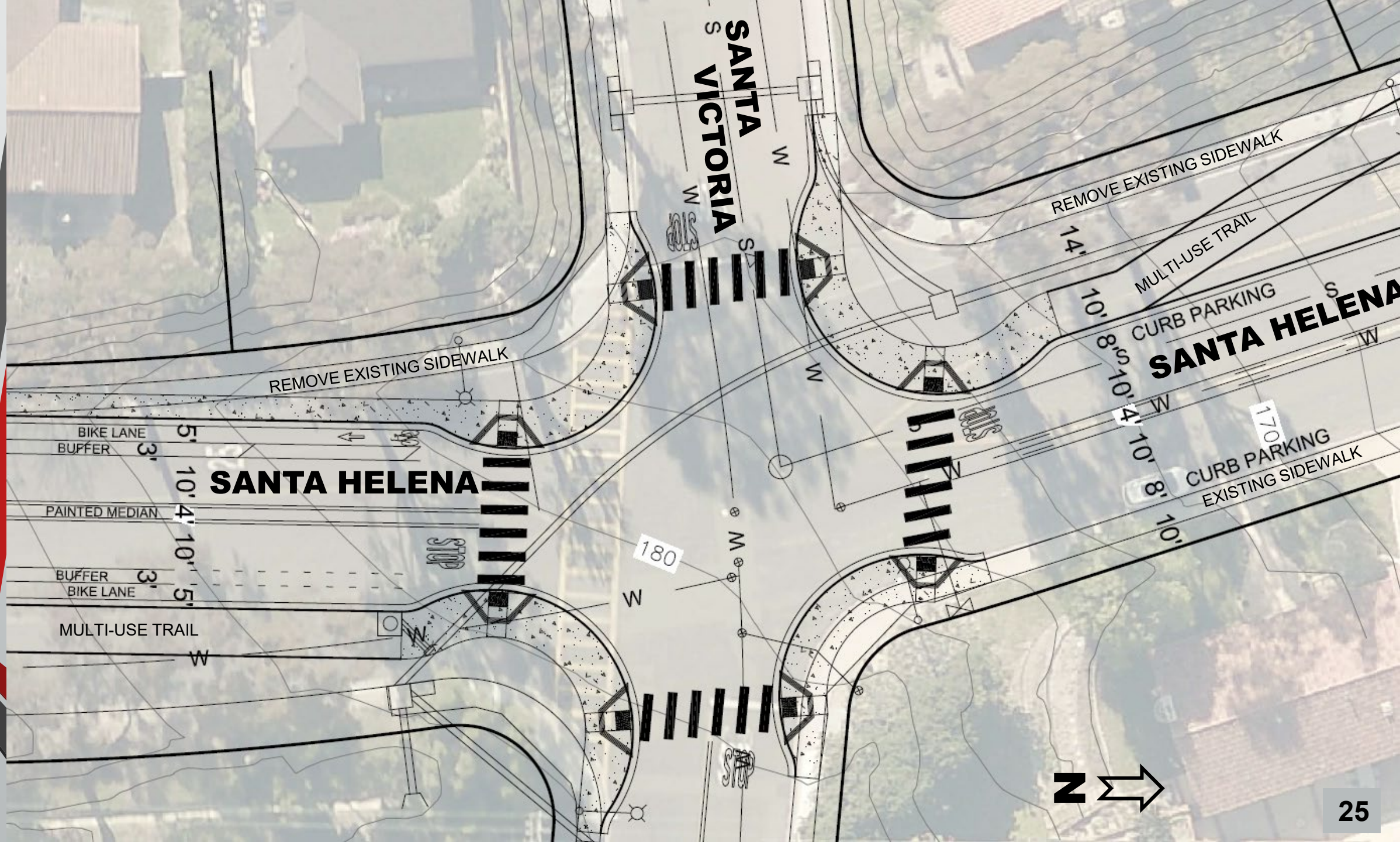


CURB DATA			
NO	BEARING/DELTA	RADIUS	LENGTH
20	Δ=28°57'18"	10.00'	5.05'
21	Δ=138°14'30"	30.00'	67.67'
22	Δ=32°11'03"	10.00'	5.82'
23	Δ=0°59'33"	620.00'	10.80'
24	Δ=28°51'07"	10.00'	5.21'
25	Δ=28°57'18"	10.00'	5.05'
26	Δ=163°00'37"	30.00'	85.35'
27	N17°49'30"W	--	138.48'
28	Δ=17°40'46"	758.00'	233.90'
29	Δ=88°50'12"	30.00'	46.51'
30	N88°58'54"E	--	24.00'
31	S88°58'54"E	--	24.00'
32	Δ=90°00'00"	30.00'	47.12'
33	N1°01'06"E	--	337.58'
34	Δ=44°58'58"	50.00'	39.26'
35	Δ=44°58'58"	32.00'	25.12'









S
SANTA
S
VICTORIA

S
SANTA HELENA

LITTLE

SANTA HELENA

REMOVE EXISTING SIDEWALK

REMOVE EXISTING SIDEWALK

MULTI-USE TRAIL

CURB PARKING
EXISTING SIDEWALK

BIKE LANE
BUFFER

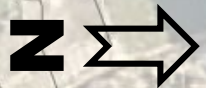
PAINTED MEDIAN

BUFFER
BIKE LANE

MULTI-USE TRAIL

180

170



SAN LEON



SAN LEON



SANTA HELENA

MULTI-USE TRAIL

TRAILHEAD





Next Phase

- Receive comments, feed back from the community
- Refine design
- Present to the City Council and ask for direction

Comments/Questions

- This concludes the formal presentation
- We are open for comments/questions/concerns
- Comments and questions can be submitted at anytime to the City of Solana Beach Engineering Department at dgoldberg@cosb.org
- A dedicated page for the project will be established on the City's website after the meeting. This page can be found at: https://www.ci.solana-beach.ca.us/index.asp?SEC=302369A5-B3B5-43E0-89D0-CB6FC77E452C&Type=B_BASIC