

Story Pole Table				
Mark	Story Pole Height	Proposed Grade	Height Above MSL	Existing Grade
A	16' - 4 1/2"	48' - 0"	64' - 4 1/2"	47' - 9"
B	17' - 3 1/2"	48' - 0"	65' - 3 1/2"	48' - 5"
C	23' - 5 1/2"	48' - 0"	71' - 5 1/2"	61' - 5"
D	25' - 1 1/2"	48' - 0"	73' - 1 1/2"	67' - 2"
E	17' - 5 1/2"	48' - 0"	65' - 5 1/2"	49' - 10 1/2"
F	20' - 8"	48' - 0"	68' - 8"	46' - 5 1/2"
G	21' - 3"	48' - 0"	69' - 3"	45' - 4 1/2"
H	13' - 6"		61' - 6"	46' - 6"
I	13' - 6"		61' - 6"	48' - 6"

© COPYRIGHT. Proprietary design. These drawings and design are protected by common law copyright. All patentable material contained herein and originating with domusstudio architecture shall be property of domusstudio architecture.  
 C:\temp\2021-10-22 Solana Beach Safety Center (2021)14\_janischwert@domusstudio.com.rvt  
 11/10/21

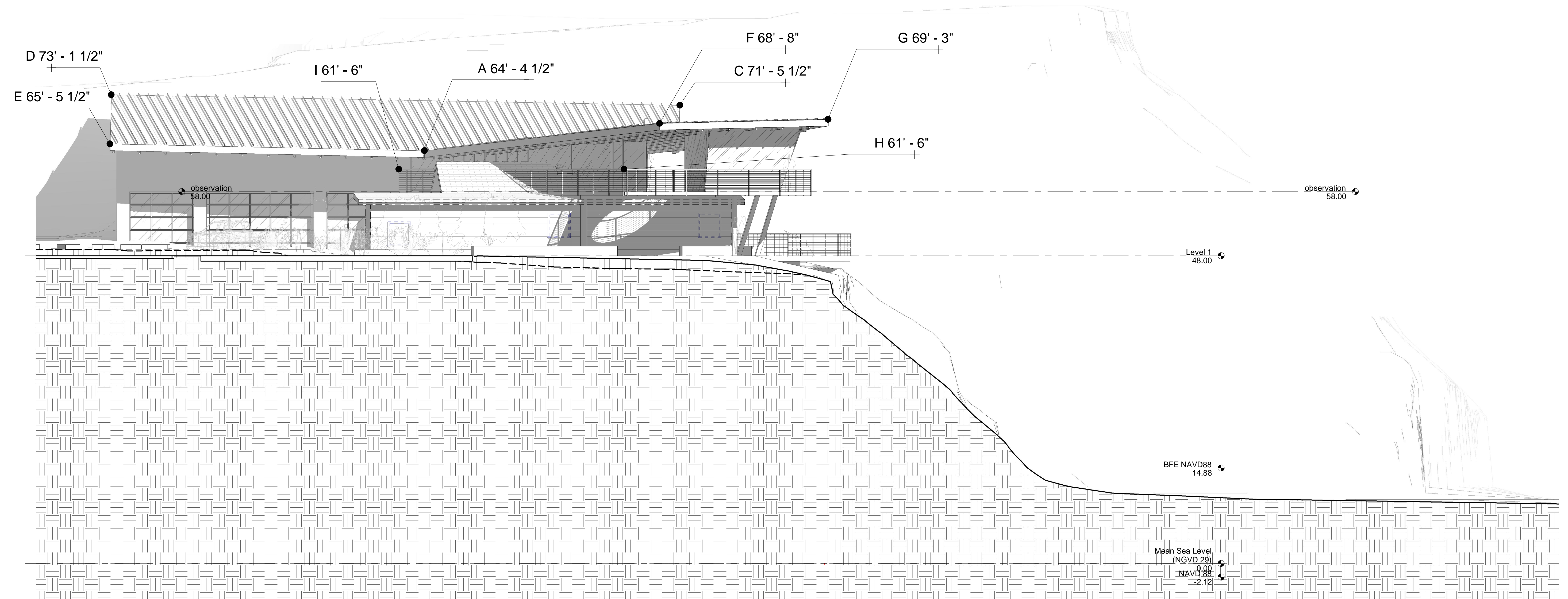
1 Story Pole Plan (Existing)  
1/4" = 1'-0"

City of Solana Beach Safety Center  
 Fletcher Cove

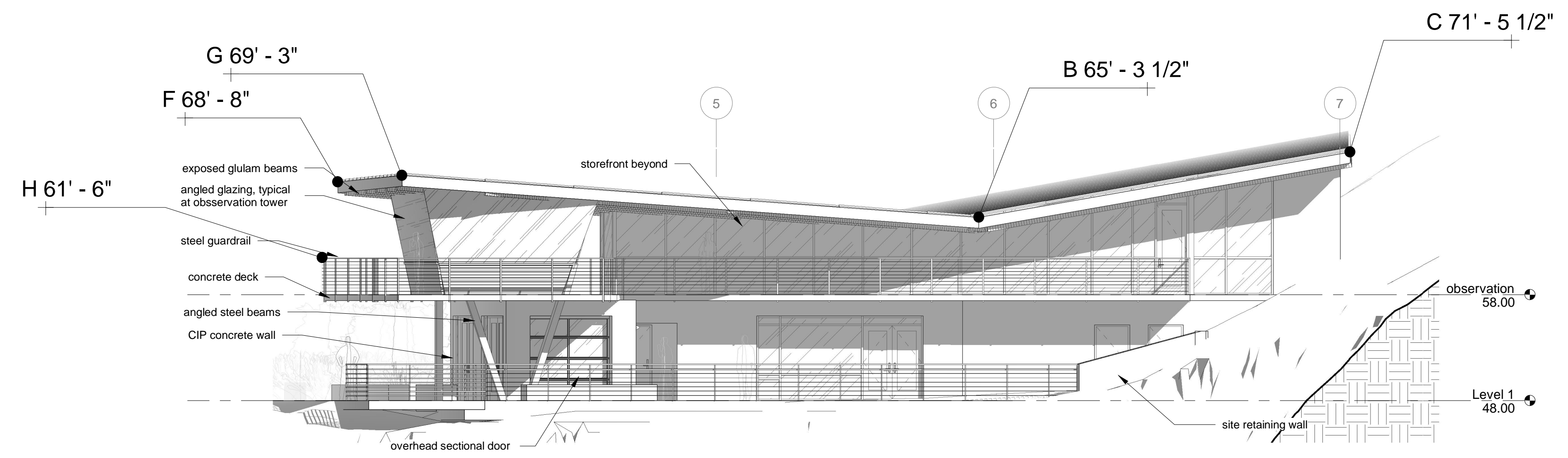
Story Pole Plan

domusstudioarchitecture  
**domusstudio**  
 ARCHITECTURE  
 2800 Third Avenue  
 San Diego, California 92110  
 30% DD Package 27 Oct 2021

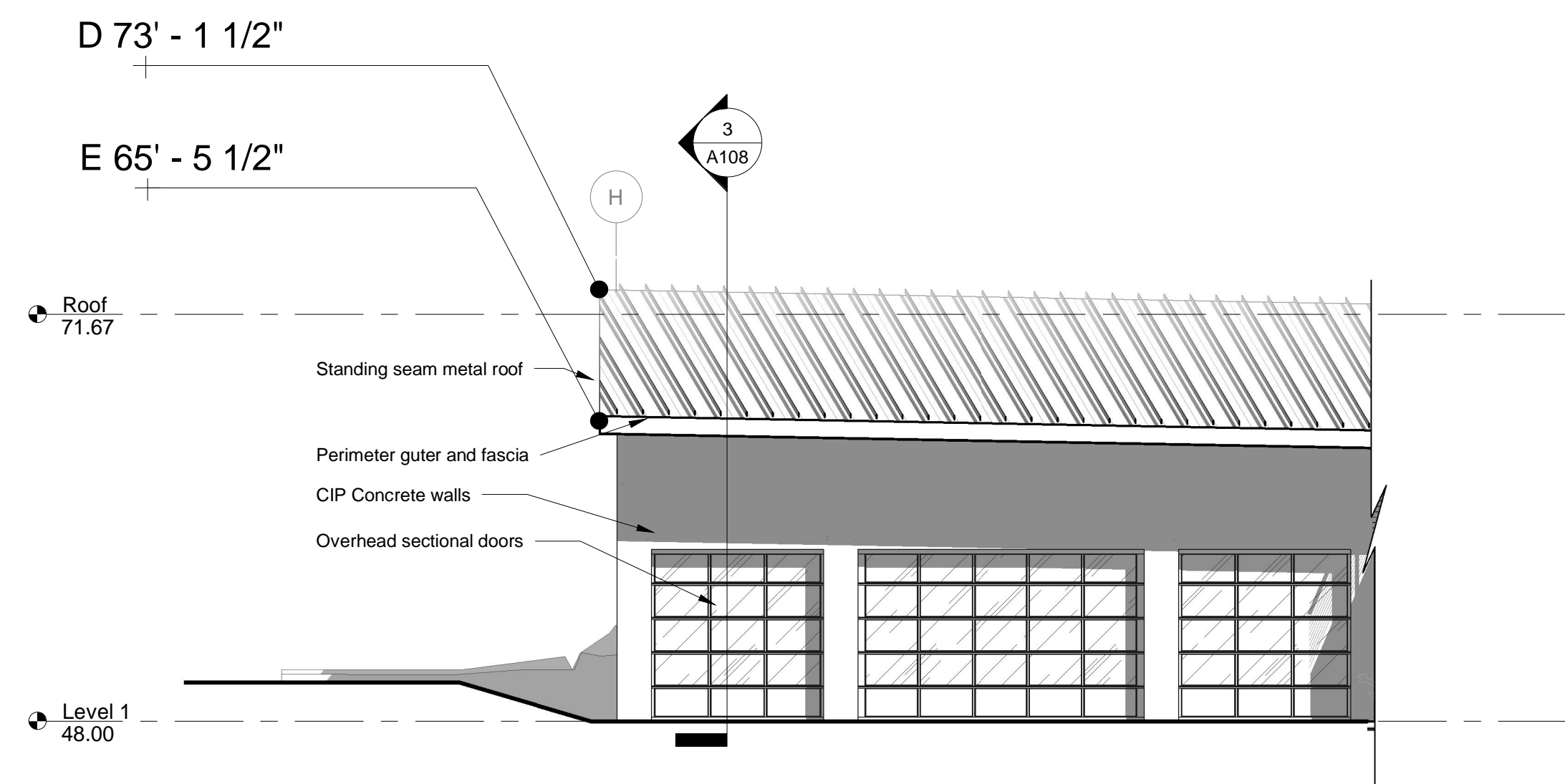
Team  
 Project No. Project Number  
 Drawing No.



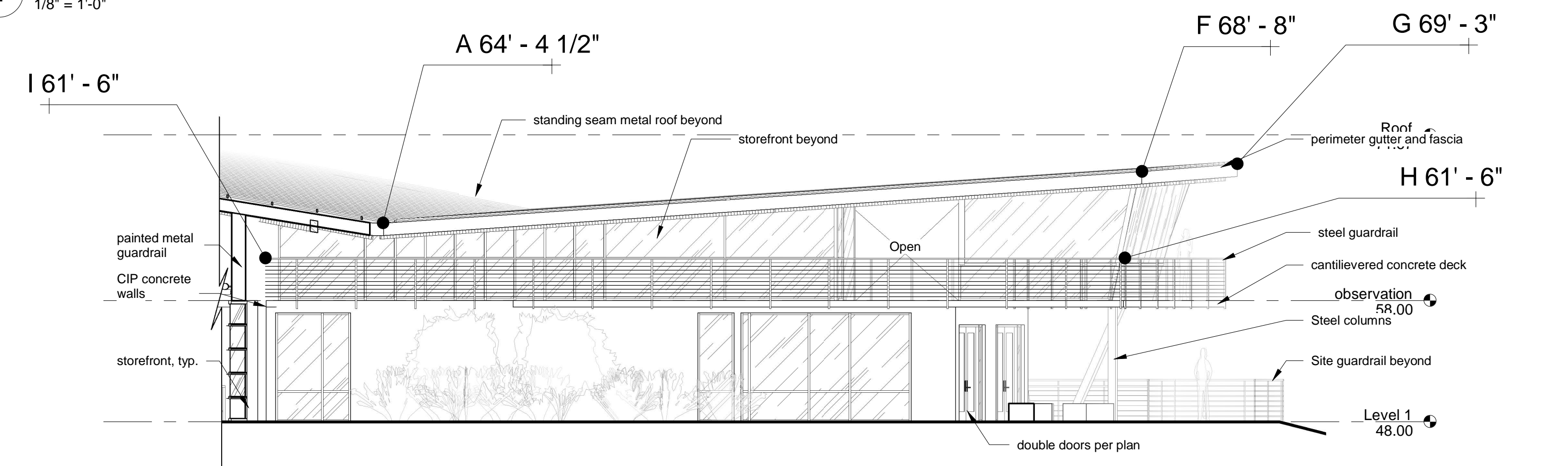
3 North Elevation - Story Pole  
1/8" = 1'-0"



4 West Elevation - Story Pole  
1/8" = 1'-0"



1 East Elevation 2 - Story Pole  
1/8" = 1'-0"



2 East Elevation - Story Pole  
1/8" = 1'-0"

© COPYRIGHT. Proprietary design. These drawings and design are protected by common law copyright. All patentable material contained herein and originating with domusstudio architecture shall be property of domusstudio architecture. C:\Temp\2021-10-22 Solana Beach Safety Center (2021)\4\_janis.schweitzer@domusstudio.com