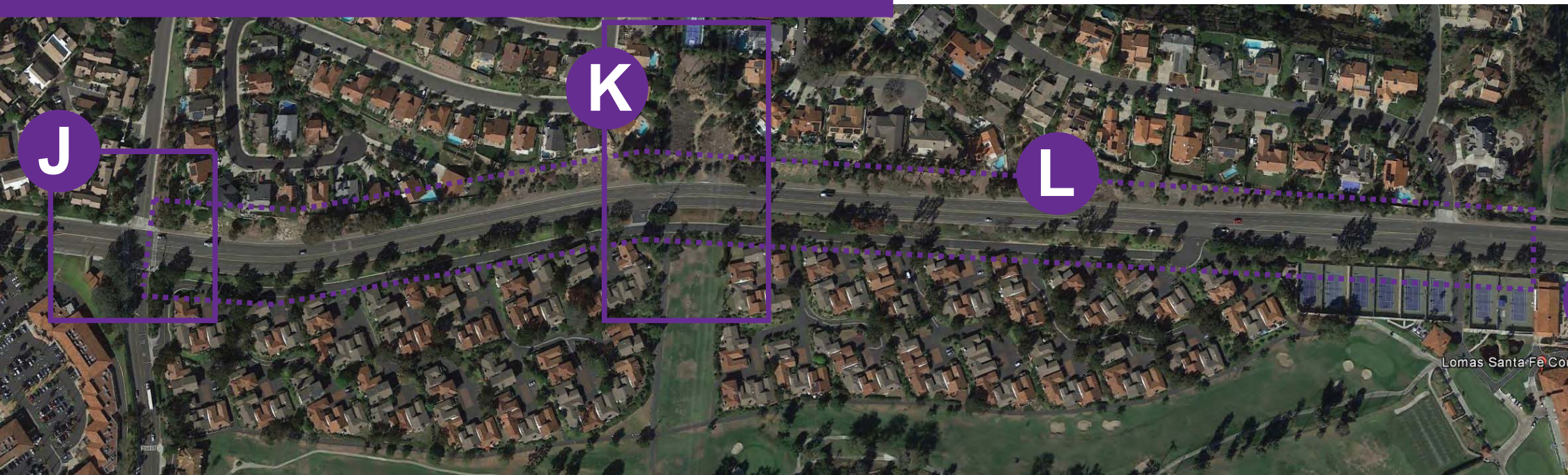
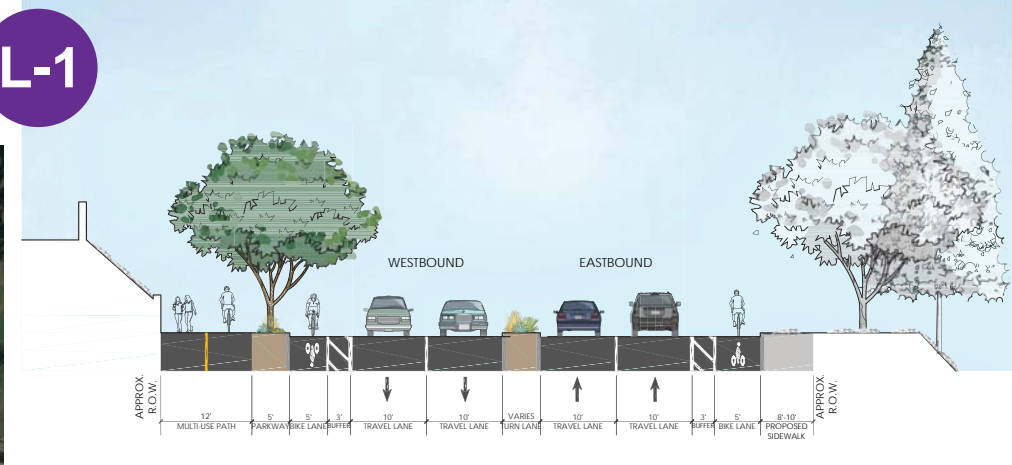


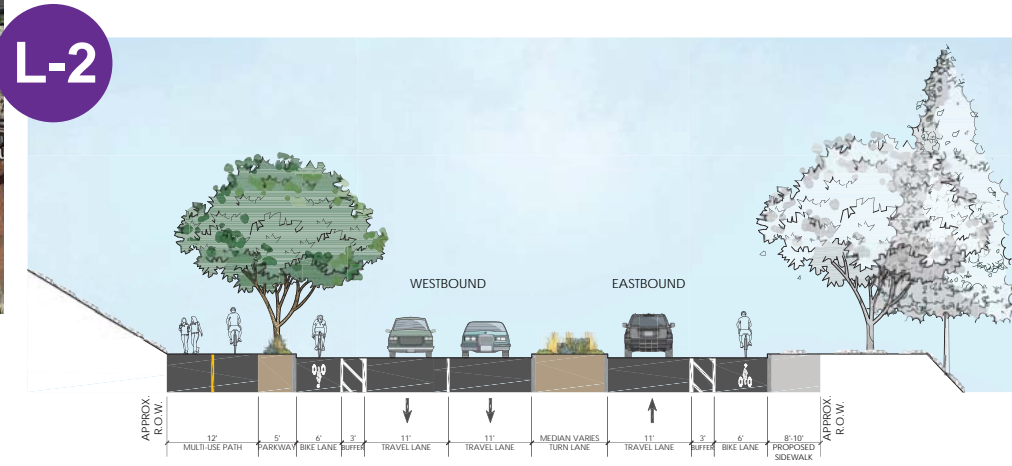
# EASTERN CORRIDOR



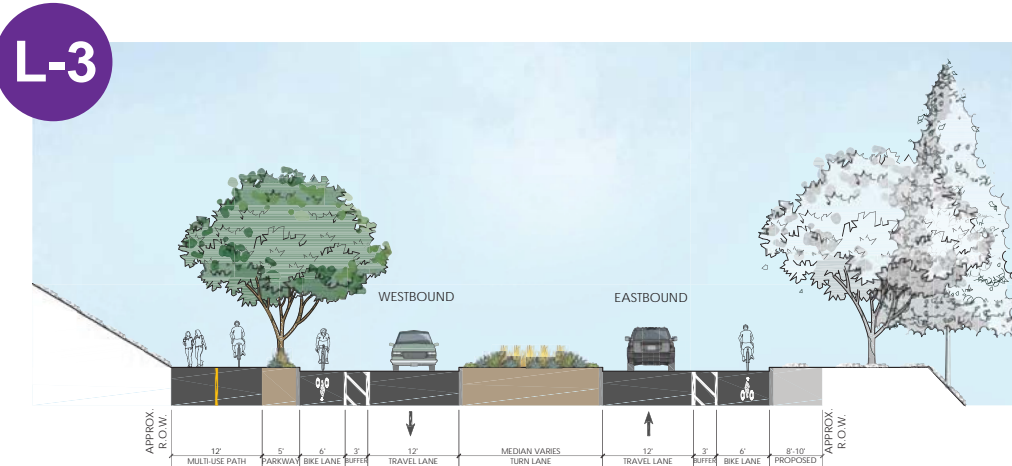
L-1



L-2



L-3



J



- PROPOSED FEATURES**
- 1 High Visibility Crosswalk Striping
  - 2 Protected Permissive Crossing
  - 3 Signal - Lead Pedestrian Phasing North/South
  - 4 Multi-use Paved Path
  - 5 Parkway
  - 6 Landscaped Median
  - 7 Green Bike Lane Striping
  - 8 Sidewalk
  - 9 Bulbout with New Curb Ramps

LAS BANDERAS DRIVE  
LOMAS SANTA FE DRIVE

K



- PROPOSED FEATURES**
- 1 Multi-use Soft Surface Path
  - 2 Multi-use Paved Path
  - 3 High Visibility Crosswalk Striping
  - 4 Parkway
  - 5 Green Bike Lane Striping
  - 6 Sidewalk
  - 7 New Pedestrian Crossing Signal  
\*Retaining wall where needed to retain slope

MID-BLOCK CROSSING AT  
POWERLINE EASEMENT  
LOMAS SANTA FE DRIVE